

PRODUCT CATALOG



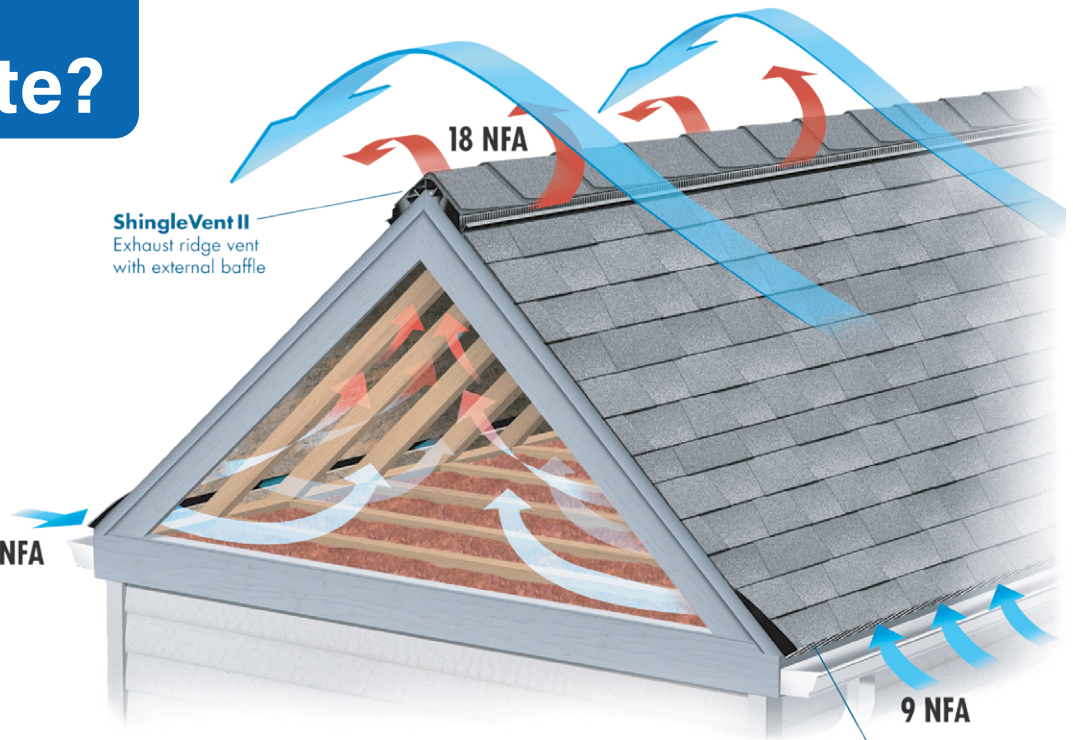
Why Ventilate?

SUMMER

During summer the temperature in your attic can reach over 150°F, and the excessive attic heat can transfer into the living area below. Even at night the attic temperature may not reduce significantly without proper ventilation.

WINTER

In winter the normal routines of cooking and bathing create moisture. If the moisture-laden air remains trapped in the attic, it can do great damage to insulation, shingles, ceilings, etc. Removing this damaging moisture with proper exhaust and intake ventilation will help prevent costly repairs.



The Balanced System

50/50 intake to exhaust ratio is recommended to create effective, year-round ventilation.

DOWNLOAD THE AIR VENT® APP

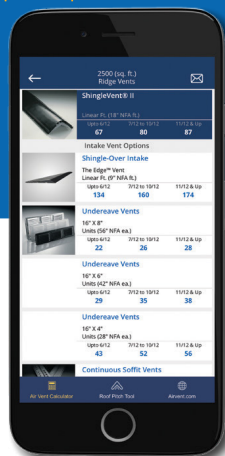
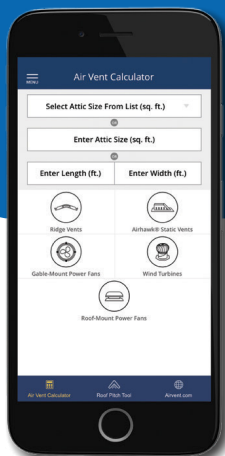
AIR VENT INC.



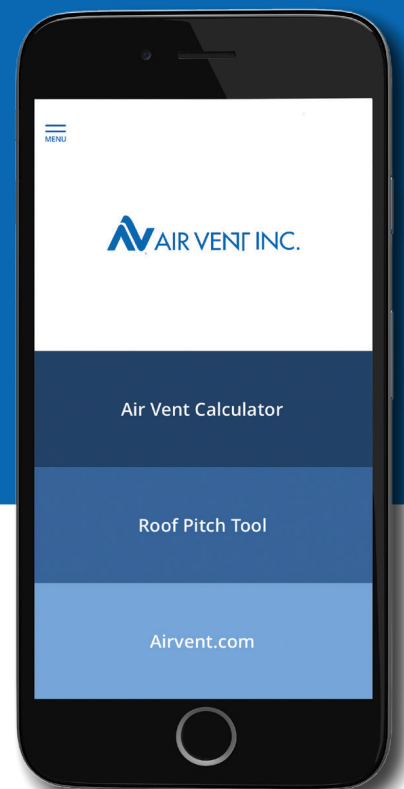
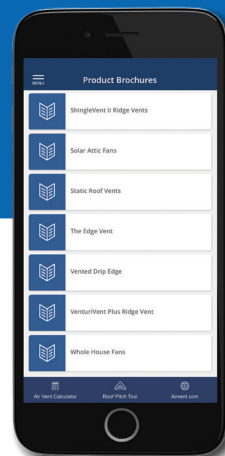
Here it is! Your handy resource for residential and light commercial attic ventilation at your fingertips from the company that brings you Ask the Expert™ Seminars.

Enter the attic size you want to ventilate and the APP takes it from there, Then choose from a list of compatible products.

Download product information.



Find other useful information.



The APP is available FREE for IOS and Android systems. Download it today from the APP store!

TABLE OF CONTENTS

Ridge Vents.....	Page 4	Solar Powered Attic Ventilators.....	Page 19
Rolled Ridge Vents.....	Page 8	Intake Vents: Rooftop/Fascia.....	Page 20
Plastic Static Vents.....	Page 9	Intake Vents: Continuous Soffit.....	Page 22
Galvanized Static Vents.....	Page 10	Intake Vents: Undereave / Mini Louvers.....	Page 23
Aluminum Static Vents.....	Page 12	Bath and Dryer Vent.....	Page 24
Wall (Gable Mount) Vents.....	Page 13	Vent Cap.....	Page 24
Wind Turbines.....	Page 14	Skylight Tube.....	Page 24
Roof-Mount Attic Ventilators.....	Page 16	Whole House Fans.....	Page 25
Gable Mount Attic Ventilators.....	Page 18	Foundation Vents.....	Page 26
Gable Shutter.....	Page 18		



ShingleVent II



HE15 High Efficiency Attic Ventilator



ShadowHawk® Low Profile



Adjustable Type B Gas Vent Cap

What Do Attic Ventilation Product Certifications Mean to Our Customers?



Replacement Plus Protection

Under Replacement Plus Protection, Air Vent will pay to replace products found to be defective including labor.

Products must be installed in strict accordance with Air Vent's written installation instructions. See the full warranty on www.airvent.com



UL or ETL Listing

UL safety testing provides confidence that the product will not cause injury or fire when installed according to the manufacturer's instructions.



Miami-Dade Product Approval

Miami and Dade counties are prone to hurricanes, so their building code requires stringent testing. Miami-Dade approved products will not ingest significant rain when installed correctly, even when subjected to hurricane-velocity winds.



Texas Department of Insurance Product Evaluation

Roofing products are exposed to extreme suction forces on the coast of Texas. TDI evaluated products have a published, quantified resistance to being pulled off a roof during a high-wind event.



Florida Building Code Product Approval

Products with FBC product approval comply with Florida's stringent requirements for resistance to wind, rain, and debris associated with hurricanes.



International Code Council

Evaluation Service ICC-ES products satisfy the evaluated ICC building codes. Keep in mind, local codes vary from place to place and may not be included in this evaluation.



Wildland Urban Interface - WUI

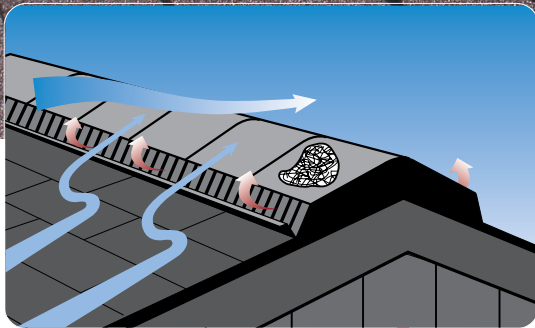
WUI code compliant products reduce the chance that a home will catch fire during a wildfire due to burning embers.



Canadian Standards Association (CSA)

Products listed with CSA have a verified NFA value and the minimum required flange size, fastener quality, material thickness, and resistance to wind, rain, and corrosion. CSA standards stem from UL, CSA Group, American National Standards Institute (ANSI), and other North American and global organizations.

RIDGE VENTS



The **external wind baffle** directs airflow up and over the vent, creating an area of low pressure over the vent openings, pulling air out of the attic – even when the wind is not 100% perpendicular to the vent.

The **external wind baffle** is the first line of defense to deflect rain and snow over the vent, protecting the roof and attic from weather infiltration.

An **internal weather filter** is an additional layer to help trap snow before it can enter the attic, and it protects against dust and insect intrusion.

ShingleVent® II

Preprinted slot guides for proper slot width and alignment.

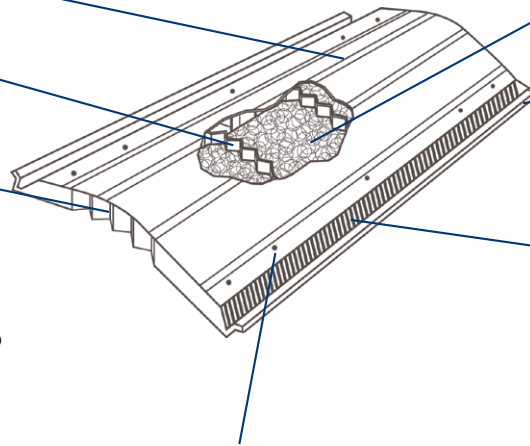
Internal ribs add strength and stability without compromising flexibility.

Built-in ventilating end plug features a self-closing, weather-tight, hinged design.

Hinged ventilating end plug design flexes for different roof pitches without affecting the rounded radius of the vent so cap shingles lay flat over the vent to help prevent cap shingles from cracking.

Made of durable, copolymer resins so the vent remains sturdy, nailable and flexible in all climates.

Cap shingles install easily, making the vent virtually invisible.



Weather filter provides advanced protection from rain, snow, dust and insect intrusion.

External wind baffle deflects wind and weather over the vent. Creates low pressure above the vent to pull air out of the attic even when the wind is not 100% perpendicular to the vent.

Air slots allow air movement while protecting the attic from bugs.

Designed with reinforced nail bosses to help prevent over nailing.

Preformed to a 4/12 pitch so the vent can easily flex for steep slope installations.

Nail holes at 16" and 24" center make it easy to locate and nail through studs.

Fact: after 10 years of accelerated wind-blown dust exposure, Air Vent's ShingleVent II ridge vent collected 3.3 grams of dust for a 2-foot section. It was the lowest amount of any of the ridge vents tested. Furthermore, the dust collected only resulted in a 5% reduction in airflow performance. That's 10% at the 20-year mark, 15% at 30 years. It's more realistic that the entire roof will be replaced by that time.

ShingleVent® II

12" Filtered Shingle-Over Ridge Vent

MODEL:	SHFVBL
LENGTH:	4'
PCS/CTN:	10
CTNS/PALLET:	15
COLOR:	Black



- 18 sq. in. NFA per linear ft.
- External wind baffle enhances airflow
- Built-in ventilating end plugs
- 3/12 to 16/12 roof pitch
- Internal weather filter helps prevent weather, insect, and dust infiltration
- Limited lifetime warranty; 5-year Replacement Plus™ protection



ShingleVent® II with Nails

12" Filtered Shingle-Over Ridge Vent with Nails

MODEL:	SHFVBLN
LENGTH:	4'
PCS/CTN:	10
CTNS/PALLET:	15
COLOR:	Black



- 18 sq. in. NFA per linear ft.
- External wind baffle enhances airflow
- Built-in ventilating end plugs
- 3/12 to 16/12 roof pitch
- Internal weather filter helps prevent weather, insect, and dust infiltration
- Ring shank nails included
- Limited lifetime warranty; 5-year Replacement Plus™ protection



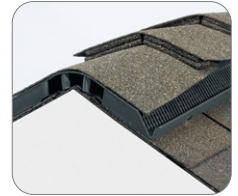
ShingleVent® II-9A

9" Filtered Shingle-Over Ridge Vent, Class A Fire Rated

MODEL:	CLASH9CC
LENGTH:	4'
PCS/CTN:	10
CTNS/PALLET:	20
COLOR:	Charcoal



- Approved for Class A roof decks
- 9" wide for cedar shake or enhanced cap shingles
- 16 sq. in. NFA per linear ft.
- External wind baffle enhances airflow
- Built-in ventilating end plugs
- 3/12 to 12/12 roof pitch
- Internal weather filter helps prevent weather, insect, and dust infiltration
- Limited lifetime warranty; 5-year Replacement Plus™ protection



ShingleVent® II-9

9" Filtered Shingle-Over Ridge Vent

MODEL:	SHFV9CC
LENGTH:	4'
PCS/CTN:	10
CTNS/PALLET:	20
COLOR:	Charcoal



- 9" wide for cedar shake or enhanced cap shingles
- 16 sq. in. NFA per linear ft.
- External wind baffle enhances airflow
- Built-in ventilating end plugs
- 3/12 to 12/12 roof pitch
- Internal weather filter helps prevent weather, insect, and dust infiltration
- Limited lifetime warranty; 5-year Replacement Plus™ protection





RIDGE VENTS

VenturiVent® Plus with Nails

12" Shingle-Over Ridge Vent with Nails

MODEL / PART#: **VVPN / 84719**

LENGTH: **4'**

PCS/CTN: **10**

CTNS/PALLET: **15**

COLOR: **Black**



- 18 sq. in. NFA per linear ft.
- External wind baffle enhances airflow
- Built-in ventilating end plugs
- 3/12 to 16/12 roof pitch
- Ring shank nails included
- Limited lifetime warranty; 5-year Replacement Plus™ protection



RIDGE VENTS

Continuous Unfiltered Ridge Vent

Aluminum Ridge Vent

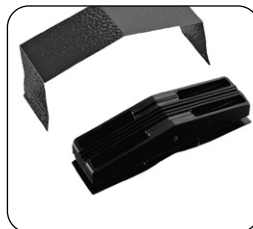
- Embossed aluminum
- 18 sq. in. NFA per linear ft.

MODEL:	RV8BL	RV8BR
PART#:	RV800010	RV800080
LENGTH:	8'	8'
PCS/CTN:	12	12
COLOR:	Black	Brown



Connector Plug and Strap

MODEL:	FVCL105BL	FVCL105BR
PART#:	84423	84422
PCS/CTN:	12	12
COLOR:	Black	Brown



End Plug

MODEL:	FVL104
PART#:	84426
PCS/CTN:	12
COLOR:	Black



ROLLED RIDGE VENTS

Peak Performer I

12" Shingle-Over Rolled Ridge Vent with Nails

MODEL / PART#: **PPI / 84731**

LENGTH: **28'**

PCS/CTN: **1**

CTNS/PALLET: **25**

COLOR: **Black**



- 12 sq. in. NFA per linear ft.
- External wind baffle enhances airflow
- Built-in ventilating end plugs
- Nail gun friendly
- 3/12 to 12/12 roof pitch
- Two coils of nails included
- Limited lifetime warranty; 5-year Replacement Plus™ protection



Peak Performer II

12" Filtered Shingle-Over Rolled Ridge Vent with Nails

MODEL / PART#: **PPII / 84732**

LENGTH: **28'**

PCS/CTN: **1**

CTNS/PALLET: **25**

COLOR: **Black**



- 12 sq. in. NFA per linear ft.
- External wind baffle enhances airflow
- Built-in ventilating end plugs
- Nail gun friendly
- 3/12 to 12/12 roof pitch
- Two coils of nails included
- Internal weather filter helps prevent weather, insect, and dust infiltration
- Limited lifetime warranty; 5-year Replacement Plus™ protection



VenturiVent® Roll

12" Shingle-Over Rolled Ridge Vent

MODEL / PART#: **VVR20 / 84735**

LENGTH: **20'**

PCS/CTN: **1**

CTNS/PALLET: **24**

COLOR: **Black**



- 12 sq. in. NFA per linear ft.
- External wind baffle enhances airflow
- Built-in ventilating end plugs
- Nail gun friendly
- 3/12 to 12/12 roof pitch
- Limited lifetime warranty; 5-year Replacement Plus™ protection



RidgeHawk™

11" Rolled Entagled Mesh Vent with Nails

MODEL / PART#: **RH20 / 84747**

LENGTH: **20'**

PCS/CTN: **1**

CTNS/PALLET: **36**

COLOR: **Black**



- For use on horizontal ridge and diagonal hips
- 15 sq. in. NFA per linear ft.
- Breathable fabric helps prevent weather, dust, and insect infiltration
- 3/12 to 18/12 roof pitch
- Coil of nails included
- Limited lifetime warranty





PLASTIC STATIC VENTS

Airhawk® SLP61

Slant Back Plastic

MODEL:	SLP61BL	SLP61BR	SLP61GR	SLP61WW
PART#:	90121	90122	90123	90125
PCS/CTN:	6	6	6	6
CTNS/PALLET:	24	24	24	24
COLOR:	Black	Brown	Gray	Weatherwood



- 16.5" x 19.5" flashing
- 61 sq. in. NFA per vent
- 9" round opening
- Rust-free screen helps prevent insects from entering attic
- 5 year limited warranty



Airhawk® SLP150

Slant Back Plastic

MODEL:	SLP150BL	SLP150WW
PART#:	90141	90145
PCS/CTN:	2	2
CTNS/PALLET:	21	21
COLOR:	Black	Weatherwood



- 24" x 24" flashing
- 150 sq. in. NFA per vent
- 13" square opening
- Rust-free screen helps prevent insects from entering attic
- 5 year limited warranty



Airhawk® RVP61

Square Plastic

MODEL:	RVP61BL	RVP61BR	RVP61GR	RVP61WW
PART#:	90155	90156	90157	90159
PCS/CTN:	10	10	10	10
CTNS/PALLET:	16	16	16	16
COLOR:	Black	Brown	Gray	Weatherwood



- 17" x 18" flashing
- 61 sq. in. NFA per vent
- Rain diverter throat
- 9" square opening
- 5 year limited warranty



Airhawk® B-144 Plastic Dome

Round Plastic

MODEL:	B144GR
PART#:	97695
PCS/CTN:	1
CTNS/PALLET:	30
COLOR:	Gray



- Round plastic
- 24" x 24" flashing
- 144 sq. in. NFA per Vent
- 14" round opening
- 5 year limited warranty



GALVANIZED STATIC VENTS

Airhawk® RVG 55

Slant Back Galvanized

MODEL:	RVG55ML	RVG55BL	RVG55BR	RVG55WW
PART#:	RVG55006	RVG55016	RVG55086	RVG550G6
PCS/CTN:	6	6	6	6
CTNS/PALLET:	12	12	12	12
COLOR:	Mill	Black	Brown	Weatherwood



Filtered Slant Back Galvanized

MODEL:	RVG55FMF	RVG55FBL	RVG55FBR	RVG55FWH	RVG55FWW
PART#:	RVG55F06	RVG55F16	RVG55F86	RVG55F96	RVG55FG6
PCS/CTN:	6	6	6	6	6
CTNS/PALLET:	12	12	12	12	12
COLOR:	Mill	Black	Brown	White	Weatherwood



- Heavy-duty galvanized steel construction
- 50 sq. in. NFA per vent
- 8" round opening
- Optional filter for added protection from weather, dust, and insect infiltration
- 5 year limited warranty

Airhawk® RVG 51

Square Galvanized

MODEL:	RVG51ML	RVG51BL	RVG51BR	RVG51WW
PART#:	RVG51000	RVG51010	RVG51080	RVG510G0
PCS/CTN:	9	9	9	9
CTNS/PALLET:	15	15	15	15
COLOR:	Mill	Black	Brown	Weatherwood



- Heavy-duty galvanized steel construction
- Rust-free screen helps prevent insects from entering attic
- 50 sq. in. NFA per vent
- 8" round opening
- 5 year limited warranty

Airhawk® RVG 53

High Collar Square Galvanized

MODEL:	RVG53HCO
PART#:	RVG53HC000
PCS/CTN:	6
CTNS/PALLET:	12
COLOR:	Mill



- Heavy-duty galvanized steel construction
- 50 sq. in. NFA per vent
- 8" round opening
- 5 year limited warranty



Airhawk® RVG 55
Slant-Back

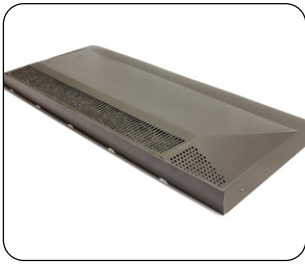


Airhawk® RVG 51
Square Vent



Airhawk® RVG 53
Square High Collar

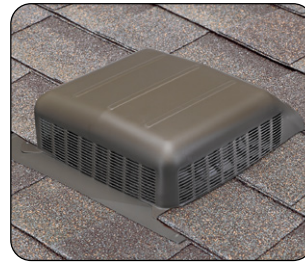
GALVANIZED STATIC VENTS



ShadowHawk® Exhaust & Intake Vent



RVG 40 Slant Back



RVG 50 Slant Back



B-144 Metal Dome

ShadowHawk® Low Profile Vent

Exhaust & Intake Vent

MODEL:	LPG72ML	LPG72BL	LPG72BR	LPG72WW
PART#:	85401	85402	85403	85404
PCS/CTN:	2	2	2	2
CTNS/PALLET:	24	24	24	24
COLOR:	Mill	Black	Brown	Weatherwood



TDI

MEMBER OF
FLORIDA COUNTY
APPROVED



Wildland
URBAN Interface

- Approved for use as exhaust and intake vent
- 72 sq. in. NFA per vent
- Internal weather filter and screen for added protection from weather, insects, and burning embers
- Optional shingle-over for camouflage effect
- Limited lifetime warranty; 5 year Replacement Plus protection

Airhawk® RVG 40

Slant Galvanized

MODEL:	RVG40ML	RVG40BL	RVG40BR	RVG40WW
PART#:	RVG40000	RVG40010	RVG40080	RVG400G0
PCS/CTN:	9	9	9	9
CTNS/PALLET:	24	24	24	24
COLOR:	Mill	Black	Brown	Weatherwood

TDI

Wildland
URBAN Interface



- Heavy-duty galvanized steel construction
- Screen helps prevent insects from entering attic
- Low profile, compact design
- 40 sq. in. NFA per vent
- 7 1/2" round opening
- 5 year limited warranty

Airhawk® RVG 50

Filtered Slant Back Galvanized

MODEL:	RVGLFMF	RVGLFBL	RVGLFBR	RVGLFWW
PART#:	RVGL50F00	RVGL50F10	RVGL50F80	RVGL50FG0
PCS/CTN:	10	10	10	10
CTNS/PALLET:	16	16	16	16
COLOR:	Mill	Black	Brown	Weatherwood

TDI



- Heavy-duty galvanized steel construction
- 50 sq. in. NFA per vent
- 8" round opening
- Filtered for added protection from weather, dust, and insect infiltration
- 5 year limited warranty

Airhawk® B-144 Metal Dome

Round Galvanized

MODEL:	B144MF	B144BK	B144BR	B144WW
PART#:	97690	97692	97693	97691
PCS/CTN:	1	1	1	1
CTNS/PALLET:	30	30	30	30
COLOR:	Mill	Black	Brown	Weatherwood



TDI



- Heavy-duty galvanized steel construction
- Rust-free screen helps prevent animals from entering attic
- 24" x 24" flashing
- 144 sq. in. NFA per vent
- 5 year limited warranty

ALUMINUM STATIC VENTS

Airhawk® SLA

Slant Back Aluminum

MODEL:	SLAGR	SLABL	SLABR	SLAWW	SLAWH
PART#:	85281	85282	85283	85284	85285
PCS/CTN:	6	6	6	6	6
CTNS/PALLET:	12	12	12	12	12
COLOR:	Gray	Black	Brown	Weatherwood	White

Filtered Slant Back Aluminum

MODEL:	SLAGRF	SLABLF	SLABRF	SLAWWF	SLAWHF
PART#:	85286	85287	85288	85289	85290
PCS/CTN:	6	6	6	6	6
CTNS/PALLET:	12	12	12	12	12
COLOR:	Gray	Black	Brown	Weatherwood	White



- Rust-resistant aluminum construction
- 1-piece base and throat is weather tight and adds strength
- 50 sq. in. NFA per vent
- 8" round opening
- Optional filter for added protection from weather, dust, and insect infiltration
- 5 year limited warranty

Airhawk® RVA 51

Square Aluminum

MODEL:	RVA51ML	RVA51BL	RVA51BR	RVA51WW
PART#:	RVA510000	RVA510100	RVA510800	RVA510G00
PCS/CTN:	12	12	12	12
CTNS/PALLET:	15	15	15	15
COLOR:	Mill	Black	Brown	Weatherwood



- Rust-resistant aluminum construction
- Rust-free screen helps prevent insects from entering attic
- 50 sq. in. NFA per vent
- 8" round opening
- 5 year limited warranty

Airhawk® RVAL 50

Slant Back Aluminum

MODEL:	RVA50ML	RVA50BL	RVA50BR	RVA50WW
PART#:	RVAL5000	RVAL5010	RVAL5080	RVAL50G0
PCS/CTN:	10	10	10	10
CTNS/PALLET:	16	16	16	16
COLOR:	Mill	Black	Brown	Weatherwood



- Rust-resistant aluminum construction
- 50 sq. in. NFA per vent
- 8" round opening
- 5 year limited warranty



SLA Slant Back



RVA 51 Square Vent



RVAL 50 Slant Back

WALL (GABLE-MOUNT) VENTS

Rectangular Gable Louver

Aluminum Wall / Gable-Mount Vent

MODEL:	8x8WH	12x12WH	12x18WH	14x24WH	18x24WH
PART#:	RL808900	81202	81214	81232	81237
PCS/CTN:	6	6	6	6	2
NET FREE AREA: (square inches)	17.6/vent	39.6/vent	59.4/vent	92.4/vent	118.8/vent
COLOR:	White	White	White	White	White



Wall-Mount Vents

- Aluminum construction
- Flush flange
- No screens





12" & 14" Internal Brace



12" & 14" External Brace

WIND TURBINES

Turbine Product Features

- Maintenance-free dual bearing system
- Adjustable base for pitches 3/12 - 12/12
- Aluminum construction is resistant to rust and corrosion
- Thermoplastic bracing system can flex in high winds and return to its original shape

Airhawk® 12" Internal Brace

12" Internal Brace

MODEL:	TIB12SML	TIB12SBL	TIB12SBR	TIB12SWW
PART#:	TIBS0000	TIBS0100	TIBS0800	TIBS0G00
PCS/CTN:	1	1	1	1
CTNS/PALLET:	30	30	30	30
COLOR:	Mill	Black	Brown	Weatherwood

- 95 sq. in. NFA per 12" turbine
- Limited lifetime warranty



Airhawk® 12" External Brace

12" External Brace

MODEL:	TOB12SML	TOB12SBL	TOB12SBR	TOB12SWW
PART#:	TOBS0000	TOBS0100	TOBS0800	TOBS0G00
PCS/CTN:	1	1	1	1
CTNS/PALLET:	24	24	24	24
COLOR:	Mill	Black	Brown	Weatherwood

- 95 sq. in. NFA per 12" turbine
- Limited lifetime warranty



Airhawk® 14" Internal Brace

14" Internal Brace

MODEL:	TIB14SML	TIB14SBL	TIB14SBR	TIB14SWW
PART#:	TIBS1400	TIBS1401	TIBS1408	TIBS140G
PCS/CTN:	1	1	1	1
CTNS/PALLET:	24	24	24	24
COLOR:	Mill	Black	Brown	Weatherwood

- 132 sq. in. NFA per 14" turbine
- Limited lifetime warranty



Airhawk® 14" External Brace

14" External Brace

MODEL:	TOB14SML	TOB14SBL	TOB14SBR	TOB14SWW
PART#:	TOBS1400	TOBS1401	TOBS1408	TOBS140G
PCS/CTN:	1	1	1	1
CTNS/PALLET:	24	24	24	24
COLOR:	Mill	Black	Brown	Weatherwood

- 132 sq. in. NFA per 14" turbine
- Limited lifetime warranty



ROOF-MOUNT ATTIC VENTILATORS



Built-in Humidistat/Thermostat

1500 CFM • Ventilates attics up to 2,300 sq. ft.

High Efficiency

MODEL:	HE15WW
PART#:	53900
PCS/CTN:	1
CTNS/PALLET:	30
COLOR:	Weatherwood



- Variable speed ECM motor
- Less electricity consumption versus traditional motors
- Motor starts on low, quiet mode and ramps up in speed as needed
- On-board computer with temperature and humidity sensors monitors attic conditions
- Heavy-duty galvanized steel dome
- Limited lifetime warranty on parts; 5-year Replacement Plus™ Protection

Pre-Wired Humidistat/Thermostat

1500 CFM • Ventilates attics up to 2,100 sq. ft.

MODEL:	ASRHPGR	ASRHPWW	ASRHPBR	ASRHPBK
PART#:	53850	53849	53848	53847
PCS/CTN:	1	1	1	1
CTNS/PALLET:	30	30	30	30
COLOR:	Gray	Weatherwood	Brown	Black



- UL listed with thermal overload protection
- Heavy-duty galvanized steel dome
- Limited lifetime warranty, 5-year Replacement Plus™ protection

1170 CFM • Ventilates attics up to 1,650 sq. ft.

MODEL:	PC12GR	PC12WW	PC12BR	PC12BK
PART#:	97711	97712	97713	97714
PCS/CTN:	1	1	1	1
CTNS/PALLET:	30	30	30	30
COLOR:	Gray	Weatherwood	Brown	Black



- UL listed with thermal overload protection
- Heavy-duty galvanized steel dome
- 10-year limited warranty; 5-year Replacement Plus™ protection



HE15 High Efficiency



ASRHP / PC12



RV26 / RV28



SV3000

Pre-Wired Thermostat

1170 CFM • Ventilates attics up to 1,650 sq. ft.

	Polypropylene Dome	Galvanized Steel Dome			
MODEL:	RV26GR	RV26BR	RV26BK	RV26WW	RV26ML
PART#:	53828	53827	53871	53829	53830
PCS/CTN:	1	1	1	1	1
CTNS/PALLET:	30	30	30	30	30
COLOR:	Gray	Brown	Black	Weatherwood	Mill



- UL listed with thermal overload protection
- 10-year limited warranty; 5-year Replacement Plus™ protection

1320 CFM • Ventilates attics up to 1,900 sq. ft.

MODEL:	RV28GR	RV28WW	RV28BR
PART#:	53833	53832	53831
PCS/CTN:	1	1	1
CTNS/PALLET:	30	30	30
COLOR:	Gray	Weatherwood	Brown



- UL listed with thermal overload protection
- Heavy-duty galvanized steel dome
- 10-year limited warranty; 5-year Replacement Plus™ protection

1500 CFM • Ventilates attics up to 2,100 sq. ft.

MODEL:	SV3000BR	SV3000WW	SV3000BL
PART#:	53853	53854	53862
PCS/CTN:	1	1	1
CTNS/PALLET:	30	30	30
COLOR:	Brown	Weatherwood	Black



- UL listed with thermal overload protection
- Heavy-duty galvanized steel dome
- Limited lifetime warranty; 5-year Replacement Plus™ protection



GABLE-MOUNT ATTIC VENTILATORS

Gable-Mount Power Attic Ventilators

	Humidistat & Thermostat	Thermostat only		
		WCGB	WCGA	APG
MODEL:	APGH			
PART#:	53320	53319	53315	53316
PCS/CTN:	1	1	1	1
CTNS/PALLET:	64	64	64	64
CFM:	1620	1320	1050	1620
VENTILATES ATTICS UP TO:	2,300 sq. ft.	1,900 sq. ft.	1,500 sq. ft.	2,300 sq. ft.



- Model APGH, APG: Limited lifetime warranty; 5 year Replacement Plus protection
- Model WCGB: 10 year limited warranty; 5 year Replacement Plus protection
- Model WCGA: 5 year limited warranty; 2 year Replacement Plus protection
- Shutter sold separately

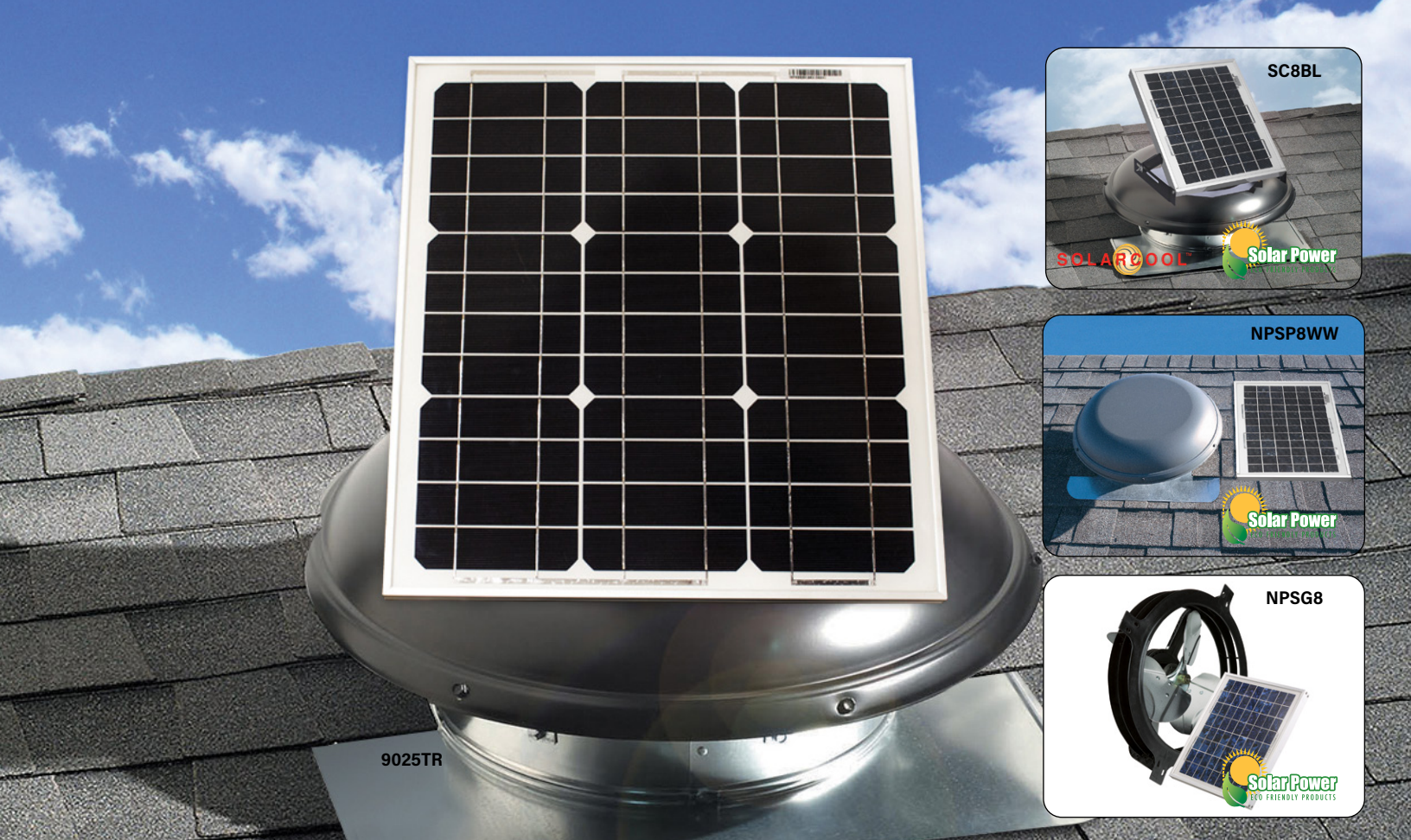
GABLE SHUTTER

Automatic Gable Shutter

Fits all Air Vent Gable Ventilators

MODEL:	SHT15W
PART#:	54703
PCS/CTN:	1
CTNS/PALLET:	160
COLOR:	White





SOLAR POWERED ATTIC VENTILATORS

Roof-Mount

	MODEL: SC8BL	NPSP8WW	9025TR
PART#:	97310	53510	97336
PCS/CTN:	1	1	1
CTNS/PALLET:	18	18	18
SOLAR PANEL:	Attached	Detached	Attached
WATTAGE:	10 watt	10 watt	25 watt
VENTILATES ATTICS UP TO:	1,200 sq. ft.	1,200 sq. ft.	2,600 sq. ft.
COLOR:	Black	Weatherwood	Black

- No electrical hook-up needed; runs completely from solar power
- 3/12 - 8/12 roof pitch
- Solar panel tilts and rotates for maximum sun exposure and energy collection (SC8BL & 9025TR)
- Solar panel mounts separately (NPSP8WW)
- Solar panel is wind, hail and impact resistant
- 5-year limited warranty; 2-year Replacement Plus™ protection (SC8BL & NPSP8WW)
- 5-year limited warranty on fan motors; 20-year on solar panel & fan housing (9025TR)

Gable-Mount

	MODEL: NPSG8	1125APV
PART#:	53560	97337
PCS/CTN:	1	1
CTNS/PALLET:	60	60
WATTAGE:	10 watt	25 watt
VENTILATES ATTICS UP TO:	1,200 sq. ft.	2,300 sq. ft.
COLOR:	Black	Black

- No electrical hook-up needed; runs completely from solar power
- Solar panel is wind, hail and impact resistant
- Model: NPSG8: 5-year limited warranty; 2-year Replacement Plus™ protection
- Model: 1125APV: 5-year limited warranty on fan motor; 20 year limited warranty on solar panel and fan housing

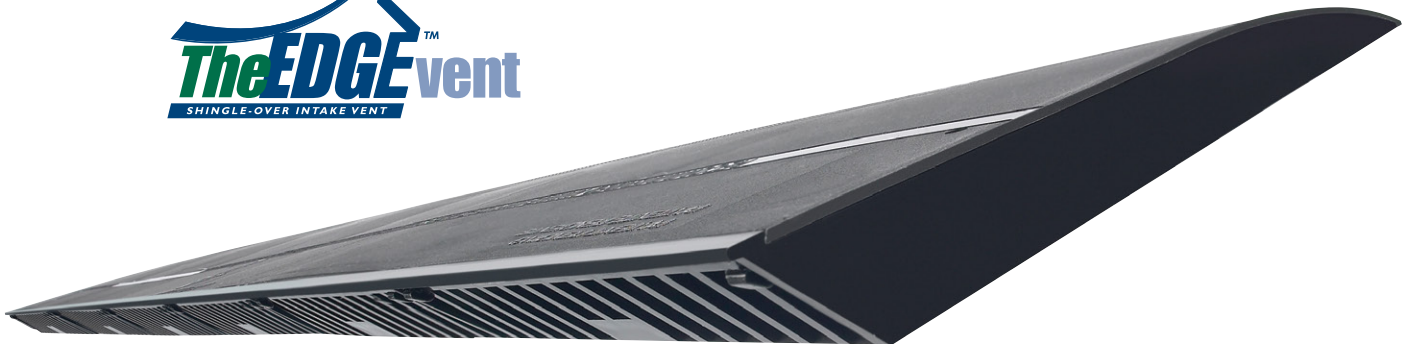
The Edge™ Vent Passes 30-Day Ice Dam Test

At no time during the testing did The Edge Vent allow for or contribute to weather infiltration into the slot or the attic.



During 30 days of freeze/thaw cycles, The Edge Vent was intentionally covered under an ice dam.

The deck under The Edge Vent and the attic itself remained dry throughout the 30-day ice dam test.



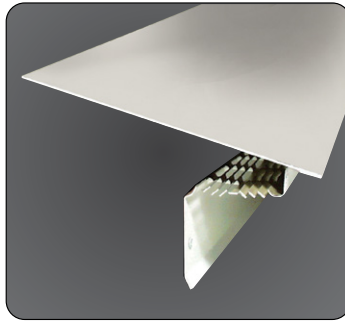
The Edge™ Vent with Shingles



The Edge™ Vent Installed



The Edge™ Vent



Pro Flow™ Vented Drip Edge



ShadowHawk® Intake & Exhaust Vent

The Edge™ Vent

Shingle-Over Roof Top Intake Vent

MODEL:	EVI
PART#:	83000
LENGTH:	4'
PCS/CTN:	10
CTNS/PALLET:	15
COLOR:	Black



- Installs on the roof's edge
- Designed for homes with or without overhangs
- 9 sq. in. NFA per linear ft.
- 3/12 - 12/12 roof pitch
- Limited lifetime warranty; 5-year Replacement Plus™ protection
- Passed 30-day ice dam testing

Pro Flow™ Vented Drip Edge

10' Drip Edge Vent

MODEL:	VDEWH
PART#:	95023
LENGTH:	10'
PCS/CTN:	10
COLOR:	White



- Designed for homes without overhangs
- Rust-resistant aluminum construction
- 9 sq. in. NFA per linear ft.

ShadowHawk® Low Profile Vent

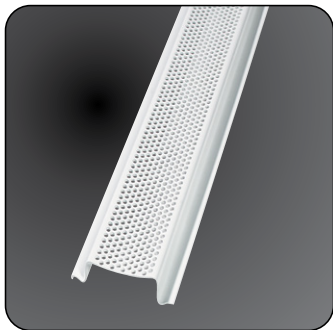
Exhaust & Intake Vent

MODEL:	LPG72ML	LPG72BL	LPG72BR	LPG72WW
PART#:	85401	85402	85403	85404
PCS/CTN:	2	2	2	2
COLOR:	Mill	Black	Brown	Weatherwood

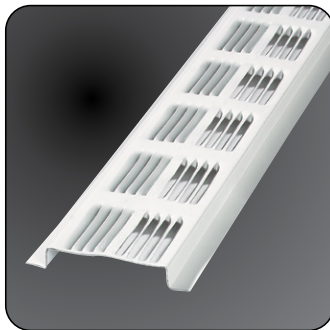
- Approved for use as exhaust and intake
- 72 sq. in. NFA per vent
- Internal weather filter and screen for added protection from weather, dust, and insects
- Optional shingle-over for camouflage effect
- Limited lifetime warranty; 5 year Replacement Plus protection



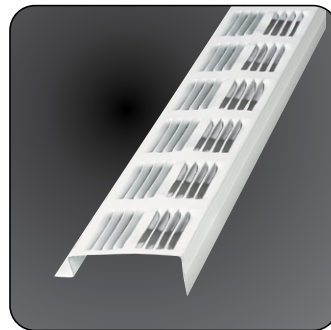
INTAKE VENTS: CONTINUOUS SOFFIT



**Perforated PVC
Retrofit**



**Louvered Aluminum
Retrofit**



**Louvered Aluminum
New Construction**

Perforated PVC

Retrofit - Double Leg Return

MODEL: **SV351WH**

PART#: **90320**

LENGTH: **8'**

PCS/CTN: **50**

COLOR: **White**



- Retrofit design for standard rafter or manufactured truss construction
- 9 sq. in. NFA per linear ft.

Louvered Aluminum

Retrofit - Double Leg Return

MODEL: **SV201MF**

SV201WH

SV201BR

PART#: **84300**

84302

84304

LENGTH: **8'**

8'

8'

PCS/CTN: **50**

50

50

COLOR: **Mill**

White

Brown



- Retrofit design for standard rafter or manufactured truss construction
- 9 sq. in. NFA per linear ft.

Louvered Aluminum

New Construction - Single Leg Return

MODEL: **SV202WH**

PART#: **84307**

LENGTH: **8'**

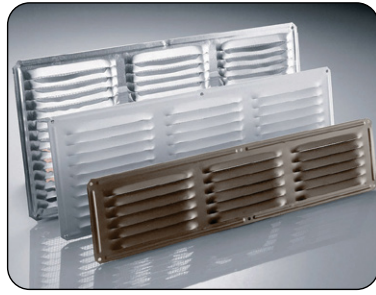
CTNS/PALLET: **50**

COLOR: **White**



- Designed for standard rafter or manufactured truss new construction
- 9 sq. in. NFA per linear ft.

INTAKE VENTS: UNDEREAVE / MINI LOUVERS



Undereave Vents



Mini Louvers

16" x 4" / 24-pack - Undereave Vents

	Aluminum			Galvanized Steel
MODEL:	EV16424MF	EV16424WH	EV16424BR	EV16424GA
PART#:	84126	84226	84228	84229
PCS/CTN:	24	24	24	24
CTNS/PALLET:	108	108	108	108
COLOR:	Mill	White	Brown	Mill

- Available in aluminum or galvanized steel construction
- 8 mesh aluminum screen
- NFA: 28 sq. in. per vent



16" x 6" / 24-pack - Undereave Vents

	Aluminum			Galvanized Steel
MODEL:	EV16624MF	EV16624WH	EV16624BR	EV16624GA
PART#:	84115	84215	84217	84219
PCS/CTN:	24	24	24	24
CTNS/PALLET:	84	84	84	84
COLOR:	Mill	White	Brown	Mill

- Available in aluminum or galvanized steel construction
- 8 mesh aluminum screen
- NFA: 42 sq. in. per vent



16" x 8" / 24-pack - Undereave Vents

	Aluminum			Galvanized Steel
MODEL:	EV16824MF	EV16824WH	EV16824BR	EV16824GA
PART#:	84210	84211	84212	84213
PCS/CTN:	24	24	24	24
CTNS/PALLET:	60	60	60	60
COLOR:	Mill	White	Brown	Mill

- Available in aluminum or galvanized steel construction
- 8 mesh aluminum screen
- NFA: 56 sq. in. per vent



Mini Louvers

	2 Inch	3 Inch	4 Inch
MODEL:	MLM2MF	MLM3MF	MLM4MF
PART#:	50001	50002	50003
NFA (sq. in.):	0.47/pc.	1.34/pc.	2.88/pc.
PCS/CTN:	36	36	36
COLOR:	Mill	Mill	Mill

- Tooled aluminum; die-stamped grill
- No screen
- 6 pieces per bag; six bags per carton



BATH OR DRYER VENT

Bath and Dryer Vent

4" Diameter Durable Plastic

MODEL:	BDVENT
PART#:	59427
PCS/CTN:	4
CTNS/PALLET:	42
COLOR:	Black



- Installs easily as a roof cap or side vent
- 3-7/8" stem length
- Dampened for one-way venting
- Screen protects against insects and debris; removable for dryer venting
- 3/12 - 12/12 roof pitch

VENT CAP

Adjustable Type B Gas Vent Cap

	Fits Pipes 3 - 5"	Fits Pipes 5 - 7"	Fits Pipes 7 - 9"
MODEL:	PTOP3-5	PTOP5-7	PTOP7-9
PART#:	53904	53905	53906
PCS/CTN:	12	12	12
CTNS/PALLET:	24	24	24
COLOR:	Mill	Mill	Mill



- For LP and gas-fired appliances
- Rust-resistant aluminum construction
- Louvered openings help prevent weather debris and birds from entering vent
- 5 year limited warranty

SKYLIGHT TUBE

14 Inch Luminant Skylight Tube

Skylight Tube with Light Kit

MODEL:	2214ST-LK
PART#:	98104
PCS/CTN:	1
CTNS/PALLET:	18
COLOR:	Black

- Includes Light Kit
- Acrylic Dome
- Pre-attached 6' flexible tube
- Reduces energy usage
- 10 year limited warranty



WHOLE HOUSE FANS

Whole-House Fan Product Features

- Shipped in assembled wood frame
- UL listed with thermal overload protection
- Automatic shutter included



36" Belt-Drive/Shutter

6,900 CFM, Ventilates up to 2,300 sq. ft.

MODEL: **WH362BDX**

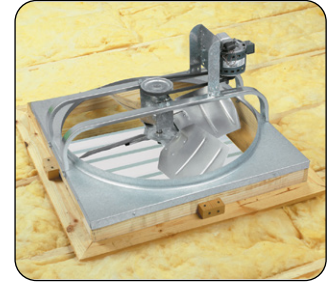
PART#: **54508**

PCS/CTN: **1**

CTNS/PALLET: **8**



- 2-speed wall switch included (#58030)
- Wireless Switch Kit #58082 available (sold separately)
- Belt-drive pulley allows quieter operation
- 10-year limited warranty; 5-year Replacement Plus™ protection



30" Belt-Drive/Shutter

5,700 CFM, Ventilates up to 1,900 sq. ft.

MODEL: **WH302BDX**

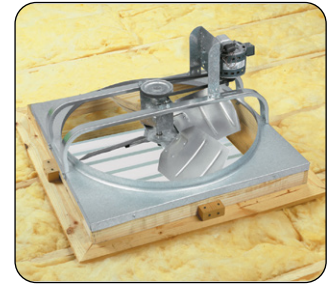
PART#: **54506**

PCS/CTN: **1**

CTNS/PALLET: **8**



- 2-speed wall switch included (#58030)
- Wireless Switch Kit #58082 available (sold separately)
- Belt-drive pulley allows quieter operation
- 10-year limited warranty; 5-year Replacement Plus™ protection



24" Direct-Drive/Shutter

3,500 CFM, Ventilates up to 1,500 sq. ft.

MODEL: **WH242MLX**

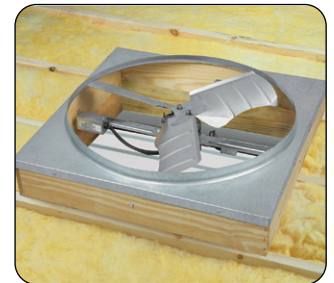
PART#: **54301**

PCS/CTN: **1**

CTNS/PALLET: **10**



- Pull-chain operation
- 2 speeds
- 10-year limited warranty; 5-year Replacement Plus™ protection



Two Speed Rocker Switch

MODEL: **TCTL2RO**

PART#: **58030**

PCS/CTN: **1**

- Included with models WH362BDX and WH302BDX
- Provides convenient wall-mount controls



Belt-Drive Wireless Switch Kit

MODEL: **58082**

PART#: **58082**

PCS/CTN: **1**

- Optional wireless switch kit for belt-drive shutter fans

POWERED FOUNDATION VENTS



**Low Voltage Powered
Foundation Vents**



Controls Kit



Plastic Vent Well

Series 6, High Output

MODEL: **TV6LVHPBL**

PART#: **94004**

PCS/CTN: **1**

CFH: **11,160 cubic ft./hr.**

COLOR: **Black**



- 8" x 16" to fit into a standard block opening
- Completely screened, front & back
- No mortar required for installation
- Totally enclosed, thermally protected motor
- Low voltage unit – no electrician required
- 3000 rpm 11.0 amps, 24 volts
- 5 year limited warranty
- * *Series 5 & 6 Requires controls kit – sold separately*

Series 5, High Output

Removable front frame

MODEL: **TV5LVHPBL**

PART#: **94002**

PCS/CTN: **1**

CFH: **11,160 cubic ft./hr.**

COLOR: **Black**



- 8" x 16" to fit into a standard block opening
- Completely screened, front & back
- No mortar required for installation
- Totally enclosed, thermally protected motor
- Low voltage unit – no electrician required
- 3000 rpm 11.0 amps, 24 volts
- 5 year limited warranty
- * *Series 5 & 6 Requires controls kit – sold separately*

Controls Kit

Kit required on all Series 5 and 6 low voltage foundation vents (sold separately)

MODEL: **LVKIT**

PART#: **94001**

PCS/CTN: **1**



- Damp weather shutoff – dual control adjusts temperature & humidity at intake vent
- Humidistat – turns unit on to mitigate humidity
- Power Supply Unit – 24 VAC output, operates up to 3 power vents
- Control Cables – 25' attaches all control kit units together
- **Kit required on all Series 5 and 6 Low Voltage Foundation Vents (needs accessible GFCI outlet)**

Plastic Vent Well

Foundation Vent Accessory

MODEL: **VWBL**

PART#: **VWBL**

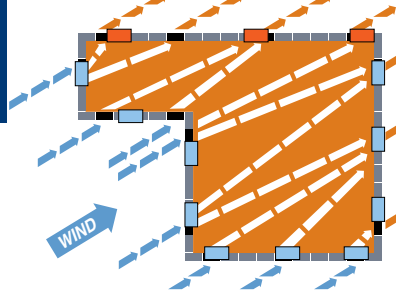
PCS/CTN: **1**

COLOR: **Black**



- The vent well provides space for below-grade foundation vents and helps keep water from the crawlspace
- An alternative to unsightly, rusted metal vent wells
- No rust thermoplastic construction

FOUNDATION VENTS



Ventilation is a system of intake and exhaust. Vents should be installed on all sides of the crawlspace to allow a free flow of air through the space.

Replacement Automatic Foundation Vent

Standard Automatic

MODEL:	RABL	RABR	RAGR
NFA (sq. in.)	50	50	50
PCS/CTN:	10	10	10
CTNS/PALLET:	16	16	16
COLOR:	Black	Brown	Gray



Replacement Automatic

- Automatically opens in warm weather and closes in cold weather
- Installs quickly with just a screwdriver
- Replaces old, unattractive vents easily
- 5 year limited warranty

Manual Replacement Foundation Vent

Manual Replacement

MODEL:	RMBL
NFA (sq. in.)	50
PCS/CTN:	10
CTNS/PALLET:	16



COLOR: **Black**



Manual Replacement

- Same housing as our automatic vents utilizing manual lever instead of automatic coil
- Easy installation
- Replaces old, unattractive vents easily

Plastic Dampers and Sliders



	Folding Damper	Sliding Damper	Jumbo Vent Slider
MODEL:	PLDPBL	PLSLBL	JMSLBL
PART#:	93800	93805	93808
NFA (sq. in.)	64	45	60
PCS/CTN:	12	12	12
CTNS/PALLET:	35	35	28
COLOR:	Black	Black	Black



Folding & Sliding Dampers

- Standard 16" X 8"

Jumbo Vent Slider

- Designed for use with oversized bricks
- 16" X 9"

Aluminum Sliders

Cast Aluminum Slider		Stamped Aluminum Slider	
MODEL:	ALSL	MODEL:	FA109
PART#:	86159	PART#:	FA109000
NFA (sq. in.)	45	NFA (sq. in.)	36
PCS/CTN:	12	PCS/CTN:	12
CTNS/PALLET:	24	CTNS/PALLET:	60
COLOR:	Mill	COLOR:	Mill



Cast Aluminum Slider

- 16" x 8"
- Can be shipped UPS
- Cast aluminum construction



Stamped Aluminum Slider

- Aluminum screen
- Adjustable sliding damper




Front & Back Cover Image Courtesy of Edgar Arellano - Lifetime Roofing, North Salt Lake, Utah



Follow us and download our free App!

Customer Service: 1-800-AIR-VENT (247-8368) | Fax: 1-800-635-7006 | airvent.com | ventilation@gibraltar1.com

A GIBRALTAR INDUSTRIES COMPANY  | AVI101P - 12/2020 | ©2020 Air Vent, Inc.