

# GIBRALTAR

**BUILDING ACCESSORIES DIVISION**

AIR VENT | APPLETON | AWARD | DOT  
NORWESCO | QAP | SEMCO

## VENTILATION PRODUCT CATALOG

# ABOUT US

The Building Accessories Division has expanded to include a growing national footprint of companies specializing in manufacturing state of the art products within the residential and commercial space.

Our locations produce the industry's best residential rainware systems and components, roofing materials, ventilation products, trims and flashing and related accessories to ensure homes withstand the test of time.

Our products help end users create a more comfortable, livable and functional environment – both inside and outside. As a result, people can experience greater peace of mind and quality of life in their homes.

At the heart of the division is the need to remain curious and that curiosity drives our strategic focus to continue to be industry leaders and create value for the channels we serve.



**Air Vent**  
 ventilation@gibraltar1.com  
 (800) 247-8368 (800-AIR-VENT)



**Appleton Supply**  
 ASCustomerservice@gibraltar1.com  
 (800) 558-3414



**Award Metals**  
 Award-CustomerService@gibraltar1.com  
 (800) 576-9810



**DOT**  
 DOT-CustomerService@gibraltar1.com  
 (855)-213-6804



**Norwesco**  
 Norwesco-CustomerService@gibraltar1.com  
 (800) 426-0940



**QAP**  
 orders@qualityaluminum.com  
 (800) 550-1667



**SEMCO**  
 SEMCO-CustomerService@gibraltar1.com  
 (800) 874-0335

## GIBRALTAR BUILDING ACCESSORIES DIVISION

*"Provider Of Quality Building Accessories, Built Upon Regional Expertise"*



### PRODUCT CATEGORIES



## GIBRALTAR

BUILDING ACCESSORIES DIVISION  
 AIR VENT | APPLETON | AWARD | DOT  
 NORWESCO | QAP | SEMCO

[gibraltarbuildingproducts.com](http://gibraltarbuildingproducts.com)

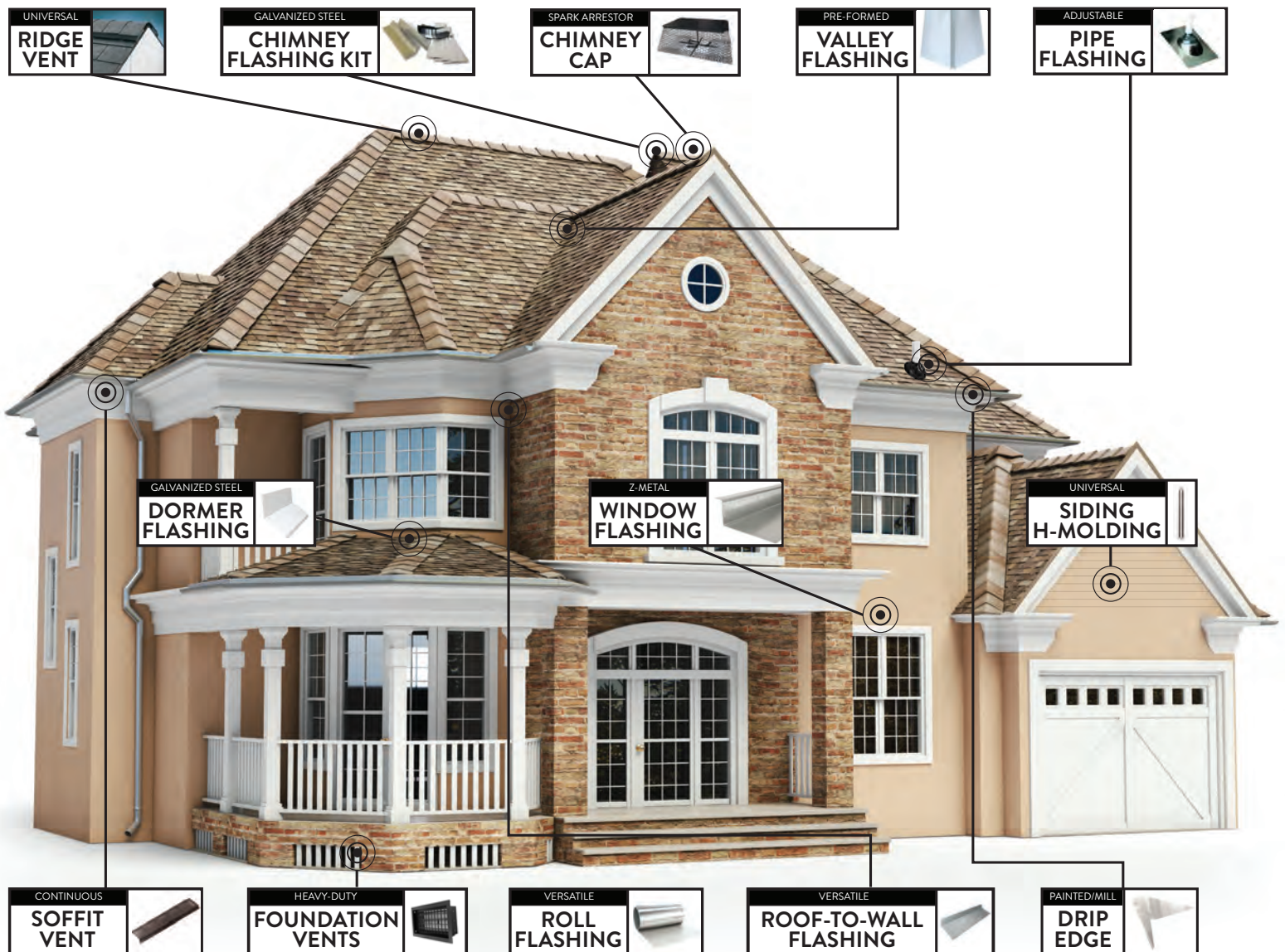
# ABOUT US

# GIBRALTAR

## BUILDING ACCESSORIES DIVISION

AIR VENT | APPLETON | AWARD | DOT  
NORWESCO | QAP | SEMCO

We offer a full line of ventilation products and building accessories to service your home from the ground up.



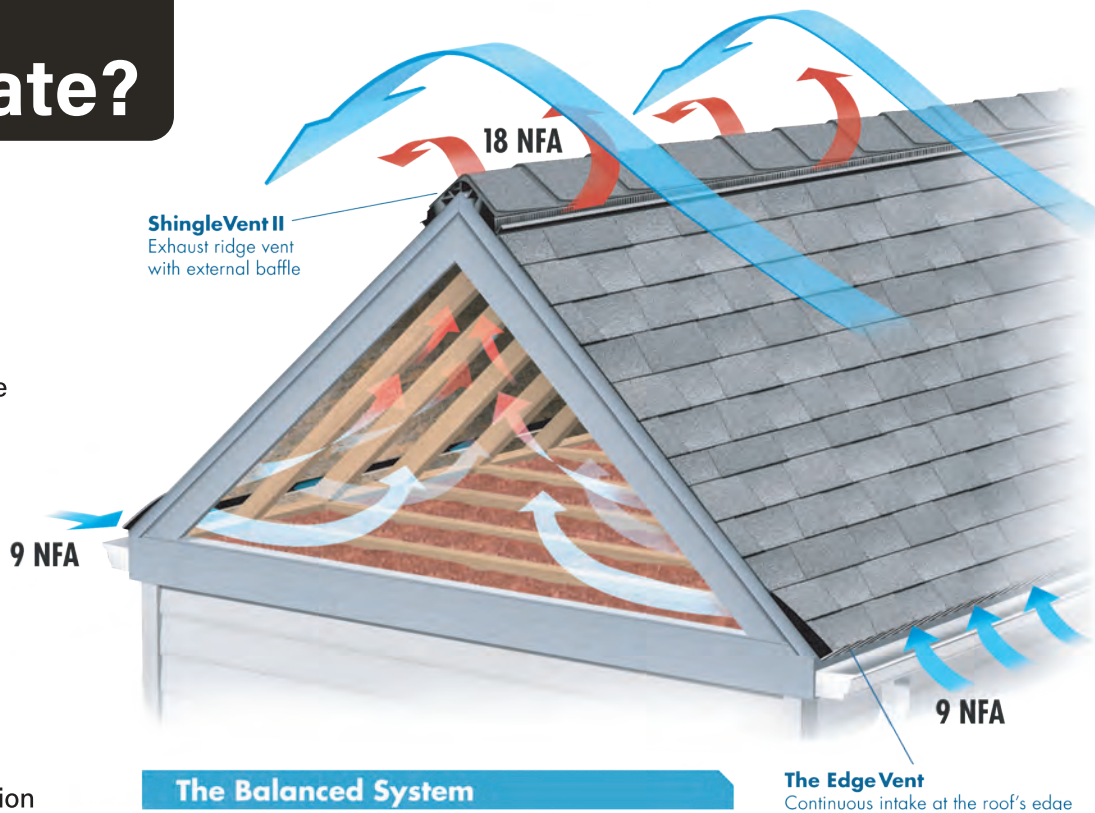
# Why Ventilate?

## SUMMER

During summer the temperature in your attic can reach over 150°F, and the excessive attic heat can transfer into the living area below. Even at night the attic temperature may not reduce significantly without proper ventilation.

## WINTER

In winter the normal routines of cooking and bathing create moisture. If the moisture-laden air remains trapped in the attic, it can do great damage to insulation, shingles, ceilings, etc. Removing this damaging moisture with proper exhaust and intake ventilation will help prevent costly repairs.



**ShingleVent II**  
Exhaust ridge vent with external baffle

9 NFA

9 NFA

### The Balanced System

50/50 intake to exhaust ratio is recommended to create effective, year-round ventilation.

### The Edge Vent

Continuous intake at the roof's edge

## DOWNLOAD THE AIR VENT® APP

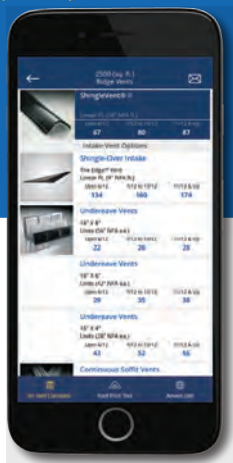
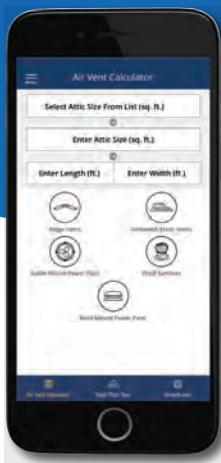


**AIR VENT**

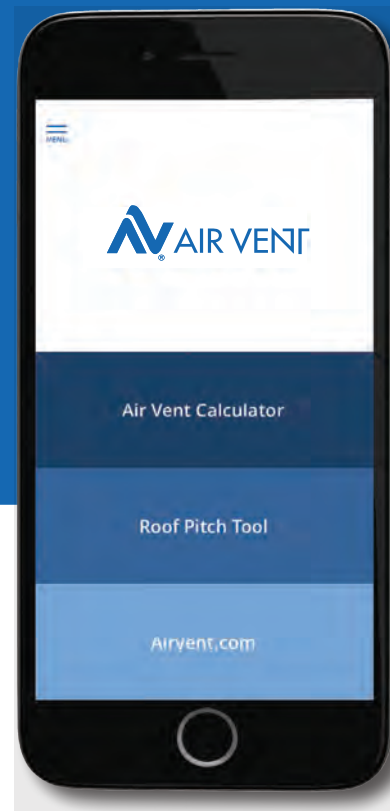
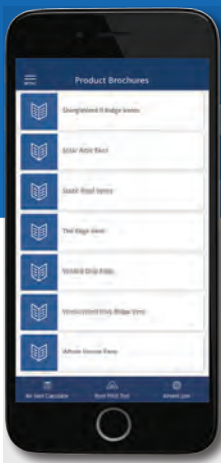
Here it is! Your handy resource for residential and light commercial attic ventilation at your fingertips from the company that brings you Ask the Expert™ Seminars.

Enter the attic size you want to ventilate and the APP takes it from there. Then choose from a list of compatible products.

Download product information.



Find other useful information.



The APP is available FREE for IOS and Android systems. Download it today from the APP store!

# TABLE OF CONTENTS

## Air Vent Products

Ridge Vents.....	Page 7
Rolled Ridge Vents.....	Page 11
Plastic Static Vents.....	Page 12
Galvanized Static Vents.....	Page 13
Aluminum Static Vents.....	Page 15
Wall (Gable-Mount) Vents.....	Page 16
Wind Turbines.....	Page 17
Roof-Mount Attic Ventilators.....	Page 19
Gable-Mount Attic Ventilators.....	Page 21
Gable Shutter.....	Page 21
Solar Powered Attic Ventilators.....	Page 22
Intake Vents.....	Page 23
Intake Vents: Continuous Soffit.....	Page 25
Intake Vents: Undereave / Mini Louvers....	Page 26
Bath and Dryer Vent.....	Page 27

## Air Vent Products

Vent Cap.....	Page 27
Skylight Tube.....	Page 27
Whole House Fans.....	Page 28
Foundation Vents/Vent Wells.....	Page 29

## Award Metals/Norwesco Products

Gable Vents.....	Page 32
Roof Top Vents.....	Page 33
Sidewall Vents.....	Page 37
Eave & Soffit Vents.....	Page 38
Foundation Vents.....	Page 39
Foundation Vents Wells.....	Page 40

## DOT Metals Products

Ventilation.....	Page 42
------------------	---------

## Semco Products

Ventilation.....	Page 44
------------------	---------



ShingleVent II



ShadowHawk®  
Low Profile



HE15 High Efficiency  
Attic Ventilator



Adjustable Type B  
Gas Vent Cap

## What Do Attic Ventilation Product Certifications Mean to Our Customers?



### Replacement Plus Protection

Under Replacement Plus Protection, Air Vent will pay to replace products found to be defective including labor.

*Products must be installed in strict accordance with Air Vent's written installation instructions. See the full warranty on [www.airvent.com](http://www.airvent.com)*



### Florida Building Code Product Approval

Products with FBC product approval comply with Florida's stringent requirements for resistance to wind, rain, and debris associated with hurricanes.



### UL or ETL Listing

UL safety testing provides confidence that the product will not cause injury or fire when installed according to the manufacturer's instructions.



### International Code Council

Evaluation Service ICC-ES products satisfy the evaluated ICC building codes. Keep in mind, local codes vary from place to place and may not be included in this evaluation.



### Miami-Dade Product Approval

Miami and Dade counties are prone to hurricanes, so their building code requires stringent testing. Miami-Dade approved products will not ingest significant rain when installed correctly, even when subjected to hurricane-velocity winds.



### Wildland Urban Interface - WUI

WUI code compliant products reduce the chance that a home will catch fire during a wildfire due to burning embers.



### Texas Department of Insurance Product Evaluation

Roofing products are exposed to extreme suction forces on the coast of Texas. TDI evaluated products have a published, quantified resistance to being pulled off a roof during a high-wind event.



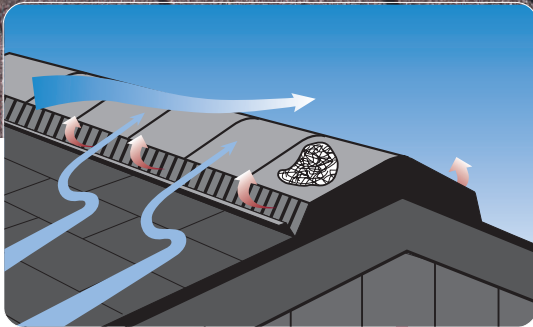
### Canadian Standards Association (CSA)

Products listed with CSA have a verified NFA value and the minimum required flange size, fastener quality, material thickness, and resistance to wind, rain, and corrosion. CSA standards stem from UL, CSA Group, American National Standards Institute (ANSI), and other North American and global organizations.



**AIR VENT**  
**VENTILATION PRODUCTS**





The **external wind baffle** directs airflow up and over the vent, creating an area of low pressure over the vent openings, pulling air out of the attic — even when the wind is not 100% perpendicular to the vent.

The **external wind baffle** is the first line of defense to deflect rain and snow over the vent, protecting the roof and attic from weather infiltration.

An **internal weather filter** is an additional layer to help trap snow before it can enter the attic, and it protects against dust and insect intrusion.

## ShingleVent® II

**Preprinted slot guides** for proper slot width and alignment.

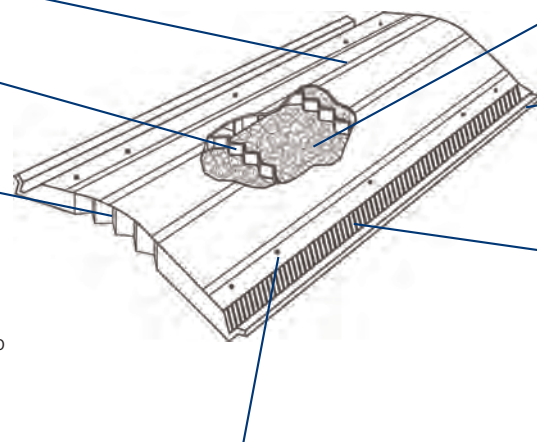
**Internal ribs** add strength and stability without compromising flexibility.

**Built-in ventilating end plug** features a self-closing, weather-tight, hinged design.

**Hinged ventilating end plug design** flexes for different roof pitches without affecting the rounded radius of the vent so cap shingles lay flat over the vent to help prevent cap shingles from cracking.

**Made of durable, copolymer resins** so the vent remains sturdy, nailable and flexible in all climates.

**Cap shingles** install easily, making the vent virtually invisible.



**Weather filter** provides advanced protection from rain, snow, dust and insect intrusion.

**External wind baffle** deflects wind and weather over the vent. Creates low pressure above the vent to pull air out of the attic even when the wind is not 100% perpendicular to the vent.

**Air slots** allow air movement while protecting the attic from bugs.

**Designed with reinforced nail bosses** to help prevent over nailing.

**Preformed** to a 4/12 pitch so the vent can easily flex for steep slope installations.

**Nail holes** at 16" and 24" center make it easy to locate and nail through studs.

**Fact:** after 10 years of accelerated wind-blown dust exposure, Air Vent's ShingleVent II ridge vent collected 3.3 grams of dust for a 2-foot section. It was the lowest amount of any of the ridge vents tested. Furthermore, the dust collected only resulted in a 5% reduction in airflow performance. That's 10% at the 20-year mark, 15% at 30 years. It's more realistic that the entire roof will be replaced by that time.

## ShingleVent® II

12" Filtered Shingle-Over Ridge Vent

MODEL: **SHFVBL**

LENGTH: **4'**

PCS/CTN: **10**

CTNS/PALLET: **15**

COLOR: **Black**



- 18 sq. in. NFA per linear ft.
- External wind baffle enhances airflow
- Built-in ventilating end plugs
- 3/12 to 16/12 roof pitch
- Internal weather filter helps prevent weather, insect, and dust infiltration
- Limited lifetime warranty; 5-year Replacement Plus™ protection



## ShingleVent® II with Nails

12" Filtered Shingle-Over Ridge Vent with Nails

MODEL: **SHFVBLN**

LENGTH: **4'**

PCS/CTN: **10**

CTNS/PALLET: **15**

COLOR: **Black**



- 18 sq. in. NFA per linear ft.
- External wind baffle enhances airflow
- Built-in ventilating end plugs
- 3/12 to 16/12 roof pitch
- Internal weather filter helps prevent weather, insect, and dust infiltration
- Ring shank nails included
- Limited lifetime warranty; 5-year Replacement Plus™ protection



## ShingleVent® II-9A

9" Filtered Shingle-Over Ridge Vent, Class A Fire Rated

MODEL: **CLASH9CC**

LENGTH: **4'**

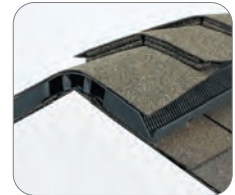
PCS/CTN: **10**

CTNS/PALLET: **20**

COLOR: **Charcoal**



- Approved for Class A roof decks
- 9" wide for cedar shake or enhanced cap shingles
- 16 sq. in. NFA per linear ft.
- External wind baffle enhances airflow
- Built-in ventilating end plugs
- 3/12 to 12/12 roof pitch
- Internal weather filter helps prevent weather, insect, and dust infiltration
- Limited lifetime warranty; 5-year Replacement Plus™ protection



## ShingleVent® II-9

9" Filtered Shingle-Over Ridge Vent

MODEL: **SHFV9CC**

LENGTH: **4'**

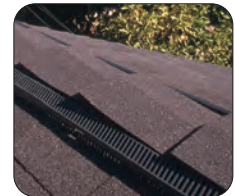
PCS/CTN: **10**

CTNS/PALLET: **20**

COLOR: **Charcoal**



- 9" wide for cedar shake or enhanced cap shingles
- 16 sq. in. NFA per linear ft.
- External wind baffle enhances airflow
- Built-in ventilating end plugs
- 3/12 to 12/12 roof pitch
- Internal weather filter helps prevent weather, insect, and dust infiltration
- Limited lifetime warranty; 5-year Replacement Plus™ protection







## RIDGE VENTS

### VenturiVent® Plus with Nails

12" Shingle-Over Ridge Vent with Nails

MODEL / PART#: **VVPN / 84719**

LENGTH: **4'**

PCS/CTN: **10**

CTNS/PALLET: **15**

COLOR: **Black**



- 18 sq. in. NFA per linear ft.
- External wind baffle enhances airflow
- Built-in ventilating end plugs
- 3/12 to 16/12 roof pitch
- Ring shank nails included
- Limited lifetime warranty; 5-year Replacement Plus™ protection



## Continuous Unfiltered Ridge Vent

Aluminum Ridge Vent

- Embossed aluminum
- 18 sq. in. NFA per linear ft.

MODEL:	<b>RV8BL</b>	<b>RV8BR</b>
PART#:	<b>RV800010</b>	<b>RV800080</b>
LENGTH:	<b>8'</b>	<b>8'</b>
PCS/CTN:	<b>12</b>	<b>12</b>
COLOR:	<b>Black</b>	<b>Brown</b>



### End Plug

MODEL:	<b>FVL104</b>
PART#:	<b>84426</b>
PCS/CTN:	<b>12</b>
COLOR:	<b>Black</b>



## Peak Performer I

12" Shingle-Over Rolled Ridge Vent with Nails

MODEL / PART#:	<b>PPI / 84731</b>
LENGTH:	<b>28'</b>
PCS/CTN:	<b>1</b>
CTNS/PALLET:	<b>25</b>
COLOR:	<b>Black</b>



- 12 sq. in. NFA per linear ft.
- External wind baffle enhances airflow
- Built-in ventilating end plugs
- Nail gun friendly
- 3/12 to 12/12 roof pitch
- Two coils of nails included
- Limited lifetime warranty; 5-year Replacement Plus™ protection



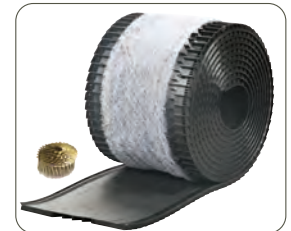
## Peak Performer II

12" Filtered Shingle-Over Rolled Ridge Vent with Nails

MODEL / PART#:	<b>PPII / 84732</b>
LENGTH:	<b>28'</b>
PCS/CTN:	<b>1</b>
CTNS/PALLET:	<b>25</b>
COLOR:	<b>Black</b>



- 12 sq. in. NFA per linear ft.
- External wind baffle enhances airflow
- Built-in ventilating end plugs
- Nail gun friendly
- 3/12 to 12/12 roof pitch
- Two coils of nails included
- Internal weather filter helps prevent weather, insect, and dust infiltration
- Limited lifetime warranty; 5-year Replacement Plus™ protection



## VenturiVent® Roll

12" Shingle-Over Rolled Ridge Vent

MODEL / PART#:	<b>VVR20 / 84735</b>
LENGTH:	<b>20'</b>
PCS/CTN:	<b>1</b>
CTNS/PALLET:	<b>24</b>
COLOR:	<b>Black</b>



- 12 sq. in. NFA per linear ft.
- External wind baffle enhances airflow
- Built-in ventilating end plugs
- Nail gun friendly
- 3/12 to 12/12 roof pitch
- Limited lifetime warranty; 5-year Replacement Plus™ protection



## RidgeHawk™

11" Rolled Entangled Mesh Vent with Nails

MODEL / PART#:	<b>RH20 / 84747   RH50 / 84748</b>
LENGTH:	<b>20' or 50'</b>
PCS/CTN:	<b>1</b>
CTNS/PALLET:	<b>36 or 15</b>
COLOR:	<b>Black</b>



- For use on horizontal ridge and diagonal hips
- 15 sq. in. NFA per linear ft.
- Breathable fabric helps prevent weather, dust, and insect infiltration
- Resistant to wind-driven rain infiltration per TAS 100(A) testing
- 3/12 to 18/12 roof pitch
- Coil of nails included
- Limited lifetime warranty



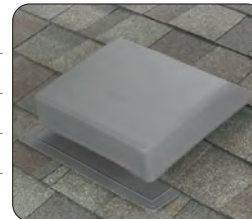


## PLASTIC STATIC VENTS

### Airhawk® SLP61

Slant Back Plastic

MODEL:	SLP61BL	SLP61BR	SLP61GR	SLP61WW
PART#:	90121	90122	90123	90125
PCS/CTN:	6	6	6	6
CTNS/PALLET:	24	24	24	24
COLOR:	Black	Brown	Gray	Weatherwood



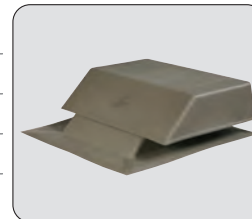
- 16.5" x 19.5" flashing
- 61 sq. in. NFA per vent
- 9" round opening
- Rust-free screen helps prevent insects from entering attic
- 5 year limited warranty



### Airhawk® SLP150

Slant Back Plastic

MODEL:	SLP150BL	SLP150WW
PART#:	90141	90145
PCS/CTN:	2	2
CTNS/PALLET:	21	21
COLOR:	Black	Weatherwood



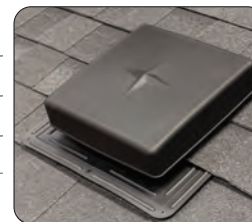
- 24" x 24" flashing
- 150 sq. in. NFA per vent
- 13" square opening
- Rust-free screen helps prevent insects from entering attic
- 5 year limited warranty



### Airhawk® RVP61

Square Plastic

MODEL:	RVP61BL	RVP61BR	RVP61GR	RVP61WW
PART#:	90155	90156	90157	90159
PCS/CTN:	10	10	10	10
CTNS/PALLET:	16	16	16	16
COLOR:	Black	Brown	Gray	Weatherwood



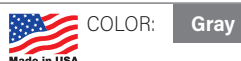
- 17" x 18" flashing
- 61 sq. in. NFA per vent
- Rain diverter throat
- 9" square opening
- 5 year limited warranty



### Airhawk® B-144 Plastic Dome

Round Plastic

MODEL:	B144GR
PART#:	97695
PCS/CTN:	1
CTNS/PALLET:	30



- Round plastic
- 24" x 24" flashing
- 144 sq. in. NFA per Vent
- 14" round opening
- 5 year limited warranty

## Airhawk® RVG 55

Slant Back Galvanized

MODEL:	<b>RVG55ML</b>	<b>RVG55BL</b>	<b>RVG55BR</b>	<b>RVG55WW</b>
PART#:	<b>RVG55006</b>	<b>RVG55016</b>	<b>RVG55086</b>	<b>RVG550G6</b>
PCS/CTN:	<b>6</b>	<b>6</b>	<b>6</b>	<b>6</b>
CTNS/PALLET:	<b>12</b>	<b>12</b>	<b>12</b>	<b>12</b>
COLOR:	<b>Mill</b>	<b>Black</b>	<b>Brown</b>	<b>Weatherwood</b>



Filtered Slant Back Galvanized

MODEL:	<b>RVG55FMF</b>	<b>RVG55FBL</b>	<b>RVG55FBR</b>	<b>RVG55FWH</b>	<b>RVG55FWW</b>
PART#:	<b>RVG55F06</b>	<b>RVG55F16</b>	<b>RVG55F86</b>	<b>RVG55F96</b>	<b>RVG55FG6</b>
PCS/CTN:	<b>6</b>	<b>6</b>	<b>6</b>	<b>6</b>	<b>6</b>
CTNS/PALLET:	<b>12</b>	<b>12</b>	<b>12</b>	<b>12</b>	<b>12</b>
COLOR:	<b>Mill</b>	<b>Black</b>	<b>Brown</b>	<b>White</b>	<b>Weatherwood</b>



- Heavy-duty galvanized steel construction
- 50 sq. in. NFA per vent
- 8" round opening
- Optional filter for added protection from weather, dust, and insect infiltration
- 5 year limited warranty

## Airhawk® RVG 51

Square Galvanized

MODEL:	<b>RVG51ML</b>	<b>RVG51BL</b>	<b>RVG51BR</b>	<b>RVG51WW</b>
PART#:	<b>RVG51000</b>	<b>RVG51010</b>	<b>RVG51080</b>	<b>RVG510G0</b>
PCS/CTN:	<b>9</b>	<b>9</b>	<b>9</b>	<b>9</b>
CTNS/PALLET:	<b>15</b>	<b>15</b>	<b>15</b>	<b>15</b>
COLOR:	<b>Mill</b>	<b>Black</b>	<b>Brown</b>	<b>Weatherwood</b>



- Heavy-duty galvanized steel construction
- Rust-free screen helps prevent insects from entering attic
- 50 sq. in. NFA per vent
- 8" round opening
- 5 year limited warranty

## Airhawk® RVG 53

High Collar Square Galvanized

MODEL:	<b>RVG53HCO</b>
PART#:	<b>RVG53HC000</b>
PCS/CTN:	<b>6</b>
CTNS/PALLET:	<b>12</b>
COLOR:	<b>Mill</b>



- Heavy-duty galvanized steel construction
- 50 sq. in. NFA per vent
- 8" round opening
- 5 year limited warranty

## Airhawk® UH 550

Square Galvanized

MODEL:	<b>UH550GV</b>	<b>UH550BL</b>	<b>UH550BR</b>
PART#:	<b>85162</b>	<b>85163</b>	<b>85164</b>
PCS/CTN:	<b>6</b>	<b>6</b>	<b>6</b>
CTNS/PALLET:	<b>30</b>	<b>30</b>	<b>30</b>
COLOR:	<b>Mill</b>	<b>Black</b>	<b>Brown</b>



- 50 sq. in. NFA per vent
- Fits a 3/12 to 8/12 roof pitch
- Galvanized steel construction
- 8 inch opening
- Steel integral screen
- 5 Year Limited Warranty

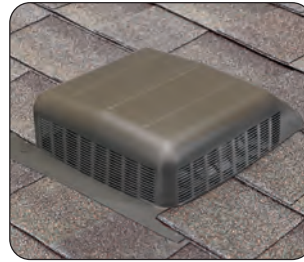
# GALVANIZED STATIC VENTS



ShadowHawk® Exhaust & Intake Vent



RVG 40 Slant Back



RVG 50 Slant Back



B-144 Metal Dome

## ShadowHawk® Low Profile Vent

Exhaust & Intake Vent

MODEL:	LPG72ML	LPG72BL	LPG72BR	LPG72WW
PART#:	85401	85402	85403	85404
PCS/CTN:	2	2	2	2
CTNS/PALLET:	24	24	24	24
COLOR:	Mill	Black	Brown	Weatherwood



- Approved for use as exhaust and intake vent
- 72 sq. in. NFA per vent
- Internal weather filter and screen for added protection from weather, insects, and burning embers
- Optional shingle-over for camouflage effect
- Limited lifetime warranty; 5 year Replacement Plus protection

## Airhawk® RVG 40

Slant Galvanized

MODEL:	RVG40ML	RVG40BL	RVG40BR	RVG40WW
PART#:	RVG40000	RVG40010	RVG40080	RVG400G0
PCS/CTN:	9	9	9	9
CTNS/PALLET:	24	24	24	24
COLOR:	Mill	Black	Brown	Weatherwood



- Heavy-duty galvanized steel construction
- Screen helps prevent insects from entering attic
- Low profile, compact design
- 40 sq. in. NFA per vent
- 7 1/2" round opening
- 5 year limited warranty

## Airhawk® RVG 50

Filtered Slant Back Galvanized

MODEL:	RVGLFMF	RVGLFBL	RVGLFBR	RVGLFWW
PART#:	RVGL50F00	RVGL50F10	RVGL50F80	RVGL50FG0
PCS/CTN:	10	10	10	10
CTNS/PALLET:	16	16	16	16
COLOR:	Mill	Black	Brown	Weatherwood



- Heavy-duty galvanized steel construction
- 50 sq. in. NFA per vent
- 8" round opening
- Filtered for added protection from weather, dust, and insect infiltration
- 5 year limited warranty

## Airhawk® B-144 Metal Dome\*

Round Galvanized

*\*Replacement Domes Available*

MODEL:	B144MF	B144BK	B144BR	B144WW
PART#:	97690	97692	97693	97691
PCS/CTN:	1	1	1	1
CTNS/PALLET:	30	30	30	30
COLOR:	Mill	Black	Brown	Weatherwood



- Heavy-duty galvanized steel construction
- Rust-free screen helps prevent animals from entering attic
- 24" x 24" flashing
- 144 sq. in. NFA per vent
- 5 year limited warranty

## Airhawk® SLA

Slant Back Aluminum

MODEL:	SLAGR	SLABL	SLABR	SLAWW	SLAWH
PART#:	85281	85282	85283	85284	85285
PCS/CTN:	6	6	6	6	6
CTNS/PALLET:	12	12	12	12	12
COLOR:	Gray	Black	Brown	Weatherwood	White

Filtered Slant Back Aluminum

MODEL:	SLAGRF	SLABLF	SLABRF	SLAWWF	SLAWHF
PART#:	85286	85287	85288	85289	85290
PCS/CTN:	6	6	6	6	6
CTNS/PALLET:	12	12	12	12	12
COLOR:	Gray	Black	Brown	Weatherwood	White



- Rust-resistant aluminum construction
- 1-piece base and throat is weather tight and adds strength
- 50 sq. in. NFA per vent
- 8" round opening
- Optional filter for added protection from weather, dust, and insect infiltration
- 5 year limited warranty

## Airhawk® RVA 51

Square Aluminum

MODEL:	RVA51ML	RVA51BL	RVA51BR	RVA51WW
PART#:	RVA510000	RVA510100	RVA510800	RVA510G00
PCS/CTN:	12	12	12	12
CTNS/PALLET:	15	15	15	15
COLOR:	Mill	Black	Brown	Weatherwood



- Rust-resistant aluminum construction
- Rust-free screen helps prevent insects from entering attic
- 50 sq. in. NFA per vent
- 8" round opening
- 5 year limited warranty

## Airhawk® RVAL 50

Slant Back Aluminum

MODEL:	RVA50ML	RVA50BL	RVA50BR	RVA50WW
PART#:	RVAL5000	RVAL5010	RVAL5080	RVAL50G0
PCS/CTN:	10	10	10	10
CTNS/PALLET:	16	16	16	16
COLOR:	Mill	Black	Brown	Weatherwood



- Rust-resistant aluminum construction
- 50 sq. in. NFA per vent
- 8" round opening
- 5 year limited warranty

## Airhawk® UH 50

Square Aluminum

MODEL:	UH50ML	UH50BL	UH50BR	UH50WW
PART#:	85150	85154	85158	85160
PCS/CTN:	6	6	6	6
CTNS/PALLET:	30	30	30	30
COLOR:	Mill	Black	Brown	Weatherwood



- 50 sq. in. NFA per vent
- Fits a 3/12 to 8/12 roof pitch
- Aluminum construction
- 8 inch opening
- Heavy, rust-free integral screen
- 5 Year Limited Warranty

# WALL (GABLE-MOUNT) VENTS



## Rectangular Gable Louver

Aluminum Wall / Gable-Mount Vent

MODEL:	<b>8x8WH</b>	<b>12x12WH</b>	<b>12x18WH</b>	<b>14x24WH</b>	<b>18x24WH</b>
PART#:	<b>RL808900</b>	<b>81202</b>	<b>81214</b>	<b>81232</b>	<b>81237</b>
PCS/CTN:	<b>6</b>	<b>6</b>	<b>6</b>	<b>6</b>	<b>2</b>
NET FREE AREA: (square inches)	<b>17.6/vent</b>	<b>39.6/vent</b>	<b>59.4/vent</b>	<b>92.4/vent</b>	<b>118.8/vent</b>
COLOR:	<b>White</b>	<b>White</b>	<b>White</b>	<b>White</b>	<b>White</b>



**Wall-Mount Vents**

- Aluminum construction
- Flush flange
- No screens







**12" & 14" Internal Brace**



**12" & 14" External Brace**

## Turbine Product Features

- Maintenance-free dual bearing system
- Adjustable base for pitches 3/12 - 12/12
- Aluminum construction is resistant to rust and corrosion
- Thermoplastic bracing system can flex in high winds and return to its original shape

## Airhawk® 12" Internal Brace

12" Internal Brace

MODEL:	TIB12SML	TIB12SBL	TIB12SBR	TIB12SWW
PART#:	TIBS0000	TIBS0100	TIBS0800	TIBS0G00
PCS/CTN:	1	1	1	1
CTNS/PALLET:	30	30	30	30
COLOR:	Mill	Black	Brown	Weatherwood

- 95 sq. in. NFA per 12" turbine
- Limited lifetime warranty



## Airhawk® 12" External Brace

12" External Brace

MODEL:	TOB12SML	TOB12SBL	TOB12SBR	TOB12SWW
PART#:	TOBS0000	TOBS0100	TOBS0800	TOBS0G00
PCS/CTN:	1	1	1	1
CTNS/PALLET:	24	24	24	24
COLOR:	Mill	Black	Brown	Weatherwood

- 95 sq. in. NFA per 12" turbine
- Limited lifetime warranty



## Airhawk® 14" Internal Brace

14" Internal Brace

MODEL:	TIB14SML	TIB14SBL	TIB14SBR	TIB14SWW
PART#:	TIBS1400	TIBS1401	TIBS1408	TIBS140G
PCS/CTN:	1	1	1	1
CTNS/PALLET:	24	24	24	24
COLOR:	Mill	Black	Brown	Weatherwood

- 132 sq. in. NFA per 14" turbine
- Limited lifetime warranty



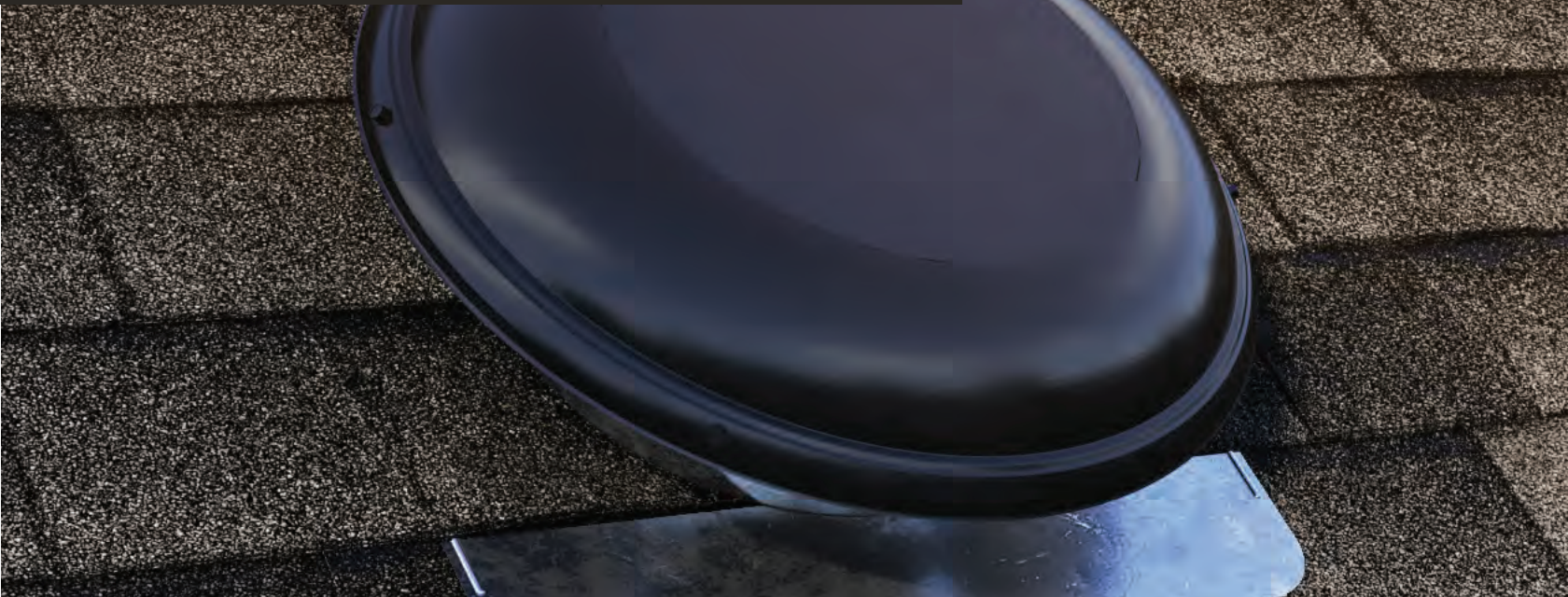
## Airhawk® 14" External Brace

14" External Brace

MODEL:	TOB14SML	TOB14SBL	TOB14SBR	TOB14SWW
PART#:	TOBS1400	TOBS1401	TOBS1408	TOBS140G
PCS/CTN:	1	1	1	1
CTNS/PALLET:	24	24	24	24
COLOR:	Mill	Black	Brown	Weatherwood

- 132 sq. in. NFA per 14" turbine
- Limited lifetime warranty





## Built-in Humidistat/Thermostat

1500 CFM • Ventilates attics up to 2,300 sq. ft.

**High Efficiency** **Up To 74% Energy Savings**

MODEL:	<b>HE15WW</b>
PART#:	<b>53900</b>
PCS/CTN:	<b>1</b>
CTNS/PALLET:	<b>30</b>
COLOR:	<b>Weatherwood</b>



- Variable speed ECM motor
- Less electricity consumption versus traditional motors
- Motor starts on low, quiet mode and ramps up in speed as needed
- On-board computer with temperature and humidity sensors monitors attic conditions
- Heavy-duty galvanized steel dome
- Limited lifetime warranty on parts; 5-year Replacement Plus™ Protection

## Pre-Wired Humidistat/Thermostat

1500 CFM • Ventilates attics up to 2,100 sq. ft.

MODEL:	<b>ASRHPGR</b>	<b>ASRHPWW</b>	<b>ASRHPBR</b>	<b>ASRHPBK</b>
PART#:	<b>53850</b>	<b>53849</b>	<b>53848</b>	<b>53847</b>
PCS/CTN:	<b>1</b>	<b>1</b>	<b>1</b>	<b>1</b>
CTNS/PALLET:	<b>30</b>	<b>30</b>	<b>30</b>	<b>30</b>
COLOR:	<b>Gray</b>	<b>Weatherwood</b>	<b>Brown</b>	<b>Black</b>



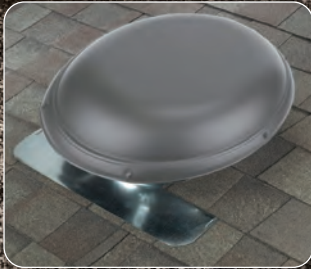
- UL listed with thermal overload protection
- Heavy-duty galvanized steel dome
- Limited lifetime warranty, 5-year Replacement Plus™ protection

1170 CFM • Ventilates attics up to 1,650 sq. ft.

MODEL:	<b>PC12GR</b>	<b>PC12WW</b>	<b>PC12BR</b>	<b>PC12BK</b>
PART#:	<b>97711</b>	<b>97712</b>	<b>97713</b>	<b>97714</b>
PCS/CTN:	<b>1</b>	<b>1</b>	<b>1</b>	<b>1</b>
CTNS/PALLET:	<b>30</b>	<b>30</b>	<b>30</b>	<b>30</b>
COLOR:	<b>Gray</b>	<b>Weatherwood</b>	<b>Brown</b>	<b>Black</b>



- UL listed with thermal overload protection
- Heavy-duty galvanized steel dome
- 10-year limited warranty; 5-year Replacement Plus™ protection



HE15 High Efficiency



ASRHP / PC12



RV26 / RV28



SV3000

## Pre-Wired Thermostat

1170 CFM • Ventilates attics up to 1,650 sq. ft.

	Polypropylene Dome	Galvanized Steel Dome			
MODEL:	RV26GR	RV26BR	RV26BK	RV26WW	RV26ML
PART#:	53828	53827	53826	53829	53830
PCS/CTN:	1	1	1	1	1
CTNS/PALLET:	30	30	30	30	30
COLOR:	Gray	Brown	Black	Weatherwood	Mill



- UL listed with thermal overload protection
- 10-year limited warranty; 5-year Replacement Plus™ protection

1320 CFM • Ventilates attics up to 1,900 sq. ft.

MODEL:	RV28GR	RV28WW	RV28BR
PART#:	53833	53832	53831
PCS/CTN:	1	1	1
CTNS/PALLET:	30	30	30
COLOR:	Gray	Weatherwood	Brown



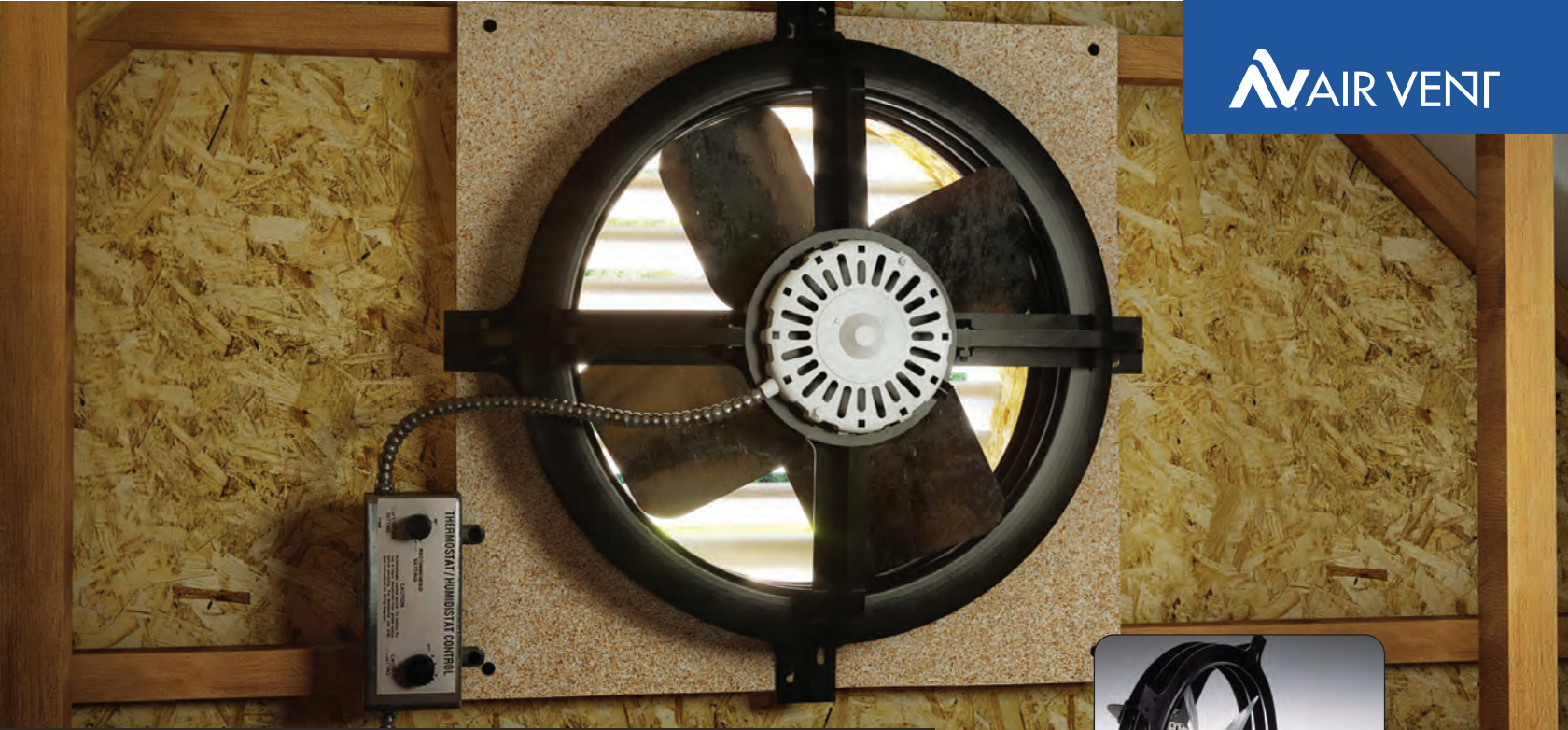
- UL listed with thermal overload protection
- Heavy-duty galvanized steel dome
- 10-year limited warranty; 5-year Replacement Plus™ protection

1500 CFM • Ventilates attics up to 2,100 sq. ft.

MODEL:	SV3000BR	SV3000WW	SV3000BL
PART#:	53853	53854	53862
PCS/CTN:	1	1	1
CTNS/PALLET:	30	30	30
COLOR:	Brown	Weatherwood	Black



- UL listed with thermal overload protection
- Heavy-duty galvanized steel dome
- Limited lifetime warranty; 5-year Replacement Plus™ protection



## GABLE-MOUNT ATTIC VENTILATORS

### Gable-Mount Power Attic Ventilators

	Humidistat & Thermostat	Thermostat only		
MODEL:	<b>APGH</b>	<b>WCGB</b>	<b>WCGA</b>	<b>APG</b>
PART#:	<b>53320</b>	<b>53319</b>	<b>53315</b>	<b>53316</b>
PCS/CTN:	<b>1</b>	<b>1</b>	<b>1</b>	<b>1</b>
CTNS/PALLET:	<b>64</b>	<b>64</b>	<b>64</b>	<b>64</b>
CFM:	<b>1620</b>	<b>1320</b>	<b>1050</b>	<b>1620</b>
VENTILATES ATTICS UP TO:	<b>2,300 sq. ft.</b>	<b>1,900 sq. ft.</b>	<b>1,500 sq. ft.</b>	<b>2,300 sq. ft.</b>



- Model APGH, APG: Limited lifetime warranty; 5 year Replacement Plus protection
- Model WCGB: 10 year limited warranty; 5 year Replacement Plus protection
- Model WCGA: 5 year limited warranty; 2 year Replacement Plus protection
- Shutter sold separately

## GABLE SHUTTER

### Automatic Gable Shutter

Fits all Air Vent Gable Ventilators

MODEL:	<b>SHT15W</b>
PART#:	<b>54703</b>
PCS/CTN:	<b>1</b>
CTNS/PALLET:	<b>160</b>
COLOR:	<b>White</b>





## SOLAR POWERED ATTIC VENTILATORS



Our solar-powered attic ventilation products may qualify for a Federal Tax Credit. Refer to the “Residential Energy Efficient Property Credit (Part I)” and the “Nonbusiness Energy Property Credit (Part II)” of IRS Form 5695. Although attic ventilation products are not specifically listed they may qualify for a credit.

### Roof-Mount

MODEL:	SC8BL	NPSP8WW	9025TR
PART#:	97310	53510	97336
PCS/CTN:	1	1	1
CTNS/PALLET:	18	18	18
SOLAR PANEL:	Attached	Detached	Attached
WATTAGE:	10 watt	10 watt	25 watt
VENTILATES ATTICS UP TO:	1,200 sq. ft.	1,200 sq. ft.	2,600 sq. ft.
COLOR:	Black	Weatherwood	Black

- No electrical hook-up needed; runs completely from solar power
- 3/12 - 8/12 roof pitch
- Solar panel tilts and rotates for maximum sun exposure and energy collection (SC8BL & 9025TR)
- Solar panel mounts separately (NPSP8WW)
- Solar panel is wind, hail and impact resistant
- 5-year limited warranty; 2-year Replacement Plus™ protection (SC8BL & NPSP8WW)
- 5-year limited warranty on fan motors; 20-year on solar panel & fan housing (9025TR)

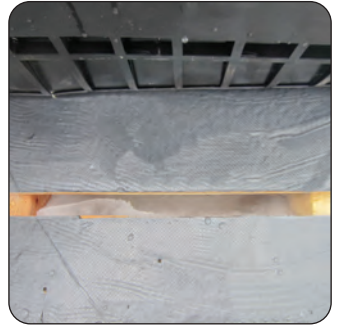
### Gable-Mount

MODEL:	NPSG8	1125APV
PART#:	53560	97337
PCS/CTN:	1	1
CTNS/PALLET:	60	60
WATTAGE:	10 watt	25 watt
VENTILATES ATTICS UP TO:	1,200 sq. ft.	2,300 sq. ft.
COLOR:	Black	Black

- No electrical hook-up needed; runs completely from solar power
- Solar panel is wind, hail and impact resistant
- Model: NPSG8: 5-year limited warranty; 2-year Replacement Plus™ protection
- Model: 1125APV: 5-year limited warranty on fan motor; 20 year limited warranty on solar panel and fan housing

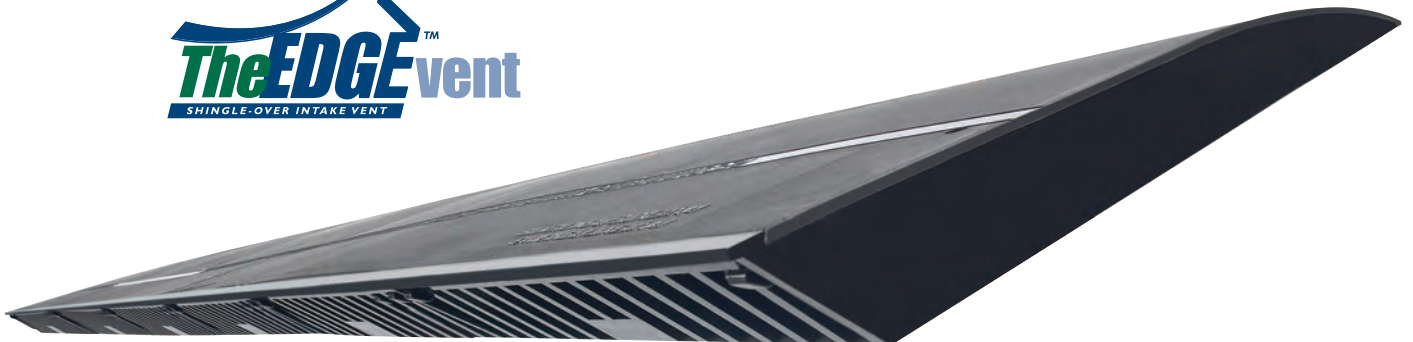
# The Edge™ Vent Passes 30-Day Ice Dam Test

At no time during the testing did The Edge Vent allow for or contribute to weather infiltration into the slot or the attic.



During 30 days of freeze/thaw cycles, The Edge Vent was intentionally covered under an ice dam.

The deck under The Edge Vent and the attic itself remained dry throughout the 30-day ice dam test.



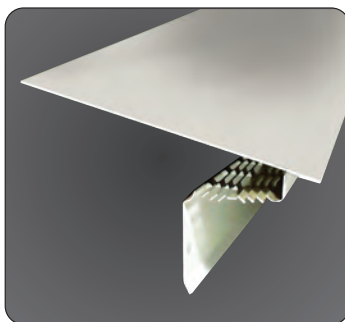
The Edge™ Vent with Shingles



The Edge™ Vent Installed



**The Edge™ Vent**



**Pro Flow™ Vented Drip Edge**



**ShadowHawk® Intake & Exhaust Vent**

## The Edge™ Vent

Shingle-Over Roof Top Intake Vent

MODEL:	<b>EVI</b>
PART#:	<b>83000</b>
LENGTH:	<b>4'</b>
PCS/CTN:	<b>10</b>
CTNS/PALLET:	<b>15</b>
COLOR:	<b>Black</b>



- Installs on the roof's edge
- Designed for homes with or without overhangs
- 9 sq. in. NFA per linear ft.
- 3/12 - 12/12 roof pitch
- Limited lifetime warranty; 5-year Replacement Plus™ protection
- Passed 30-day ice dam testing

## Pro Flow™ Vented Drip Edge

10' Drip Edge Vent

MODEL:	<b>VDEWH</b>
PART#:	<b>95023</b>
LENGTH:	<b>10'</b>
PCS/CTN:	<b>10</b>
COLOR:	<b>White</b>



- Designed for homes without overhangs
- Rust-resistant aluminum construction
- 9 sq. in. NFA per linear ft.

## ShadowHawk® Low Profile Vent

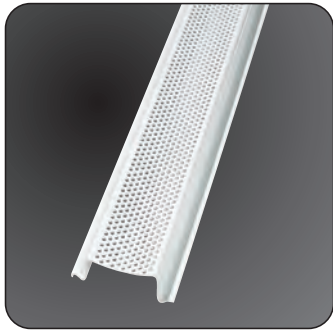
Exhaust & Intake Vent

MODEL:	<b>LPG72ML</b>	<b>LPG72BL</b>	<b>LPG72BR</b>	<b>LPG72WW</b>
PART#:	<b>85401</b>	<b>85402</b>	<b>85403</b>	<b>85404</b>
PCS/CTN:	<b>2</b>	<b>2</b>	<b>2</b>	<b>2</b>
COLOR:	<b>Mill</b>	<b>Black</b>	<b>Brown</b>	<b>Weatherwood</b>



- Approved for use as exhaust and intake
- 72 sq. in. NFA per vent
- Internal weather filter and screen for added protection from weather, dust, and insects
- Optional shingle-over for camouflage effect
- Limited lifetime warranty; 5 year Replacement Plus protection

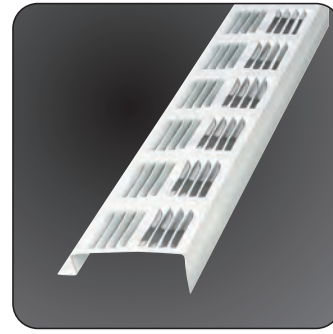




**Perforated PVC  
Retrofit**



**Louvered Aluminum  
Retrofit**



**Louvered Aluminum  
New Construction**

## Perforated PVC

Retrofit - Double Leg Return

MODEL: **SV351WH**

PART#: **90320**

LENGTH: **8'**

PCS/CTN: **50**

COLOR: **White**



- Retrofit design for standard rafter or manufactured truss construction
- 9 sq. in. NFA per linear ft.

## Louvered Aluminum

Retrofit - Double Leg Return

MODEL:	<b>SV201MF</b>	<b>SV201WH</b>	<b>SV201BR</b>
PART#:	<b>84300</b>	<b>84302</b>	<b>84304</b>
LENGTH:	<b>8'</b>	<b>8'</b>	<b>8'</b>
PCS/CTN:	<b>50</b>	<b>50</b>	<b>50</b>
COLOR:	<b>Mill</b>	<b>White</b>	<b>Brown</b>



- Retrofit design for standard rafter or manufactured truss construction
- 9 sq. in. NFA per linear ft.

## Louvered Aluminum

New Construction - Single Leg Return

MODEL: **SV202WH**

PART#: **84307**

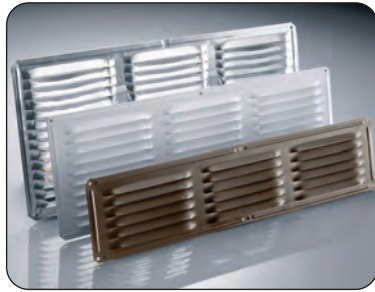
LENGTH: **8'**

CTNS/PALLET: **50**

COLOR: **White**



- Designed for standard rafter or manufactured truss new construction
- 9 sq. in. NFA per linear ft.



Undereave Vents



Mini Louvers

## 16" x 4" / 24-pack - Undereave Vents

	Aluminum		
MODEL:	<b>EV16424MF</b>	<b>EV16424WH</b>	<b>EV16424BR</b>
PART#:	<b>84126</b>	<b>84226</b>	<b>84228</b>
PCS/CTN:	<b>24</b>	<b>24</b>	<b>24</b>
CTNS/PALLET:	<b>108</b>	<b>108</b>	<b>108</b>
COLOR:	<b>Mill</b>	<b>White</b>	<b>Brown</b>

- Available in aluminum
- 8 mesh aluminum screen
- NFA: 28 sq. in. per vent



## 16" x 6" / 24-pack - Undereave Vents

	Aluminum		
MODEL:	<b>EV16624MF</b>	<b>EV16624WH</b>	<b>EV16624BR</b>
PART#:	<b>84115</b>	<b>84215</b>	<b>84217</b>
PCS/CTN:	<b>24</b>	<b>24</b>	<b>24</b>
CTNS/PALLET:	<b>84</b>	<b>84</b>	<b>84</b>
COLOR:	<b>Mill</b>	<b>White</b>	<b>Brown</b>

- Available in aluminum
- 8 mesh aluminum screen
- NFA: 42 sq. in. per vent



## 16" x 8" / 24-pack - Undereave Vents

	Aluminum			Galvanized Steel
MODEL:	<b>EV16824MF</b>	<b>EV16824WH</b>	<b>EV16824BR</b>	<b>EV16824GA</b>
PART#:	<b>84210</b>	<b>84211</b>	<b>84212</b>	<b>84213</b>
PCS/CTN:	<b>24</b>	<b>24</b>	<b>24</b>	<b>24</b>
CTNS/PALLET:	<b>60</b>	<b>60</b>	<b>60</b>	<b>60</b>
COLOR:	<b>Mill</b>	<b>White</b>	<b>Brown</b>	<b>Mill</b>

- Available in aluminum or galvanized steel construction
- 8 mesh aluminum screen
- NFA: 56 sq. in. per vent



## Mini Louvers

	2 Inch	3 Inch	4 Inch
MODEL:	<b>MLM2MF</b>	<b>MLM3MF</b>	<b>MLM4MF</b>
PART#:	<b>50001</b>	<b>50002</b>	<b>50003</b>
NFA (sq. in.):	<b>0.47/pc.</b>	<b>1.34/pc.</b>	<b>2.88/pc.</b>
PCS/CTN:	<b>36</b>	<b>36</b>	<b>36</b>
COLOR:	<b>Mill</b>	<b>Mill</b>	<b>Mill</b>

- Tooled aluminum; die-stamped grill
- No screen
- 6 pieces per bag; six bags per carton



# BATH OR DRYER VENT

## Bath and Dryer Vent

4", 5", and 6" Diameter Durable Plastic

MODEL:	<b>BDVENT</b>
PART#:	<b>4" 59427 / 5" 559433 / 6" 559439</b>
PCS/CTN:	<b>4</b>
CTNS/PALLET:	<b>30</b>
COLOR:	<b>Black</b>



- Installs easily as a roof cap or side vent
- 3-7/8" stem length
- Dampened for one-way venting
- Screen protects against insects and debris; removable for dryer venting
- 3/12 - 12/12 roof pitch

# VENT CAP

## Adjustable Type B Gas Vent Cap

	Fits Pipes 3 - 5"	Fits Pipes 5 - 7"	Fits Pipes 7 - 9"
MODEL:	<b>PTOP3-5</b>	<b>PTOP5-7</b>	<b>PTOP7-9</b>
PART#:	<b>53904</b>	<b>53905</b>	<b>53906</b>
PCS/CTN:	<b>12</b>	<b>12</b>	<b>12</b>
CTNS/PALLET:	<b>36</b>	<b>16</b>	<b>12</b>
COLOR:	<b>Mill</b>	<b>Mill</b>	<b>Mill</b>



- For LP and gas-fired appliances
- Rust-resistant aluminum construction
- Louvered openings help prevent weather debris and birds from entering vent
- 5 year limited warranty

# SKYLIGHT TUBE

## 14 Inch Luminant Skylight Tube

Skylight Tube with Light Kit

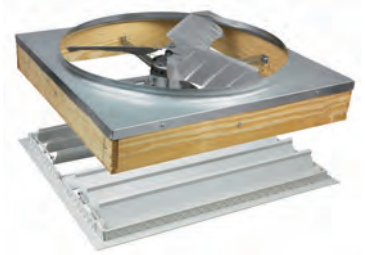
MODEL:	<b>2214ST-LK</b>
PART#:	<b>98104</b>
PCS/CTN:	<b>1</b>
CTNS/PALLET:	<b>18</b>
COLOR:	<b>Black</b>



- Includes Light Kit
- Acrylic Dome
- Pre-attached 6' flexible tube
- Reduces energy usage
- 10 year limited warranty

## Whole-House Fan Product Features

- Shipped in assembled wood frame
- UL listed with thermal overload protection
- Automatic shutter included



## 36" Belt-Drive/Shutter

6,900 CFM, Ventilates up to 2,300 sq. ft.

MODEL: **WH362BDX**

PART#: **54508**

PCS/CTN: **1**

CTNS/PALLET: **8**



- 2-speed wall switch included (#58030)
- Wireless Switch Kit #58082 available (sold separately)
- Belt-drive pulley allows quieter operation
- 10-year limited warranty; 5-year Replacement Plus™ protection



## 30" Belt-Drive/Shutter

5,700 CFM, Ventilates up to 1,900 sq. ft.

MODEL: **WH302BDX**

PART#: **54506**

PCS/CTN: **1**

CTNS/PALLET: **8**



- 2-speed wall switch included (#58030)
- Wireless Switch Kit #58082 available (sold separately)
- Belt-drive pulley allows quieter operation
- 10-year limited warranty; 5-year Replacement Plus™ protection



## 24" Direct-Drive/Shutter

3,500 CFM, Ventilates up to 1,500 sq. ft.

MODEL: **WH242MLX**

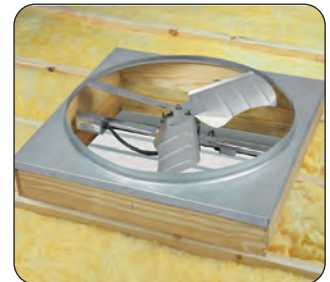
PART#: **54301**

PCS/CTN: **1**

CTNS/PALLET: **10**



- Pull-chain operation
- 2 speeds
- 10-year limited warranty; 5-year Replacement Plus™ protection



## Two Speed Rocker Switch

MODEL: **TCTL2RO**

PART#: **58030**

PCS/CTN: **1**

- Included with models WH362BDX and WH302BDX
- Provides convenient wall-mount controls



## Belt-Drive Wireless Switch Kit

MODEL: **58082**

PART#: **58082**

PCS/CTN: **1**

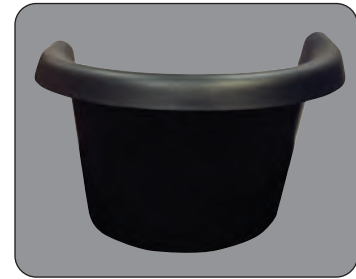
- Optional wireless switch kit for belt-drive shutter fans



**Low Voltage Powered  
Foundation Vents**



**Controls Kit**



**Plastic Vent Well**

## Series 6, High Output

MODEL: **TV6LVHPBL**

PART#: **94004**

PCS/CTN: **1**

CFH: **11,160 cubic ft./hr.**

COLOR: **Black**



- 8" x 16" to fit into a standard block opening
- Completely screened, front & back
- No mortar required for installation
- Totally enclosed, thermally protected motor
- Low voltage unit – no electrician required
- 3000 rpm 11.0 amps, 24 volts
- 5 year limited warranty
- \* Series 5 & 6 Requires controls kit – sold separately*

## Series 5, High Output

Removable front frame

MODEL: **TV5LVHPBL**

PART#: **94002**

PCS/CTN: **1**

CFH: **11,160 cubic ft./hr.**

COLOR: **Black**



- 8" x 16" to fit into a standard block opening
- Completely screened, front & back
- No mortar required for installation
- Totally enclosed, thermally protected motor
- Low voltage unit – no electrician required
- 3000 rpm 11.0 amps, 24 volts
- 5 year limited warranty
- \* Series 5 & 6 Requires controls kit – sold separately*

## Controls Kit

Kit required on all Series 5 and 6 low voltage foundation vents (sold separately)

MODEL: **LVKIT**

PART#: **94001**

PCS/CTN: **1**



- Damp weather shutoff – dual control adjusts temperature & humidity at intake vent
- Humidistat – turns unit on to mitigate humidity
- Power Supply Unit – 24 VAC output, operates up to 3 power vents
- Control Cables – 25' attaches all control kit units together
- **Kit required on all Series 5 and 6 Low Voltage Foundation Vents (needs accessible GFCI outlet)**

## Plastic Vent Well

Foundation Vent Accessory

MODEL: **VWBL**

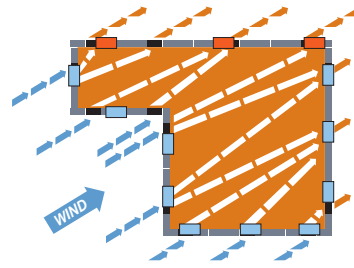
PART#: **VWBL**

PCS/CTN: **1**

COLOR: **Black**



- The vent well provides space for below-grade foundation vents and helps keep water from the crawlspace
- An alternative to unsightly, rusted metal vent wells
- No rust thermoplastic construction



Ventilation is a system of intake and exhaust. Vents should be installed on all sides of the crawlspace to allow a free flow of air through the space.

## Replacement Automatic Foundation Vent

Standard Automatic

MODEL:	RABL	RABR	RAGR
NFA (sq. in.)	50	50	50
PCS/CTN:	10	10	10
CTNS/PALLET:	16	16	16
COLOR:	Black	Brown	Gray



Replacement Automatic

- Automatically opens in warm weather and closes in cold weather
- Installs quickly with just a screwdriver
- Replaces old, unattractive vents easily
- 5 year limited warranty

## Manual Replacement Foundation Vent

Manual Replacement

MODEL:	RMBL
NFA (sq. in.)	50
PCS/CTN:	10
CTNS/PALLET:	16
COLOR:	Black



Manual Replacement

- Same housing as our automatic vents utilizing manual lever instead of automatic coil
- Easy installation
- Replaces old, unattractive vents easily

## Plastic Dampers and Sliders



	Folding Damper	Sliding Damper	Jumbo Vent Slider
MODEL:	PLDPBL	PLSLBL	JMSLBL
PART#:	93800	93805	93808
NFA (sq. in.)	64	45	60
PCS/CTN:	12	12	12
CTNS/PALLET:	35	35	28
COLOR:	Black	Black	Black



### Folding & Sliding Dampers

- Standard 16" X 8"

### Jumbo Vent Slider

- Designed for use with oversized bricks
- 16" X 9"

## Aluminum Sliders

Cast Aluminum Slider		Stamped Aluminum Slider	
MODEL:	ALSL	MODEL:	FA109
PART#:	86159	PART#:	FA109000
NFA (sq. in.)	45	NFA (sq. in.)	36
PCS/CTN:	12	PCS/CTN:	12
CTNS/PALLET:	24	CTNS/PALLET:	60
COLOR:	Mill	COLOR:	Mill



Cast Aluminum Slider

- 16" x 8"
- Can be shipped UPS
- Cast aluminum construction



Stamped Aluminum Slider

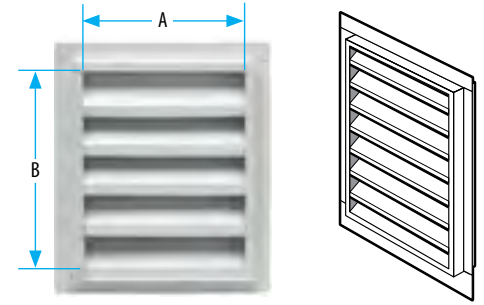
- 16" x 8"
- Aluminum screen
- Adjustable sliding damper



# VENTILATION PRODUCTS

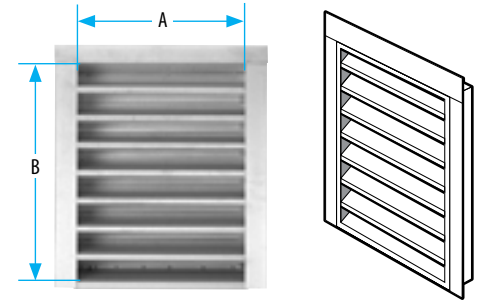
## Rectangular Gable Louver: Flange Center 1/8 inch galvanized insect screen · Pack Quantity: 10

Size: A x B	N.F.V.	Galvanized	Brown	White
12 in. x 12 in.	50.5 sq. in.	GLFC1212G	GLFC1212BR	GLFC1212WH
12 in. x 18 in.	79.0 sq. in.	GLFC1218G	GLFC1218BR	GLFC1218WH
14 in. x 12 in.	56.2 sq. in.	-	-	GLFC1412WH
14 in. x 18 in.	93.4 sq. in.	-	GLFC1418BR	GLFC1418WH
14 in. x 24 in.	131.6 sq. in.	GLFC1424G	GLFC1424BR	GLFC1424WH



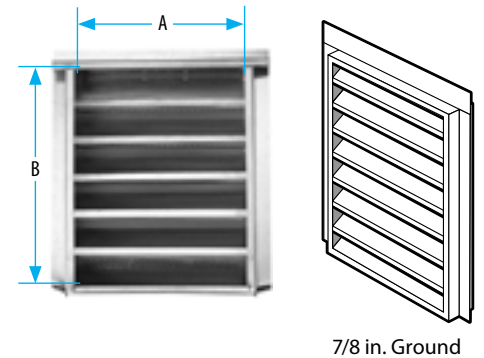
## Rectangular Gable Louver: Flange Front 1/8 inch galvanized insect screen

Size: A x B	N.F.V.	Galvanized	White	QTY
12 in. x 12 in.	50.5 sq. in.	GLFF1212G-1/8	GLFF1212WH-1/8	10
12 in. x 18 in.	79.0 sq. in.	GLFF1218G-1/8	GLFF1218WH-1/8	10
14 in. x 12 in.	56.2 sq. in.	-	GLFF1412WH-1/8	10
14 in. x 18 in.	93.4 sq. in.	GLFF1418G-1/8	GLFF1418WH-1/8	10
14 in. x 24 in.	131.6 sq. in.	GLFF1424G-1/8	GLFF1424WH-1/8	10
18 in. x 24 in.	165.7 sq. in.	GLFF1824G-1/8	-	5
24 in. x 24 in.	221.5 sq. in.	GLFF2424G-1/8	-	5



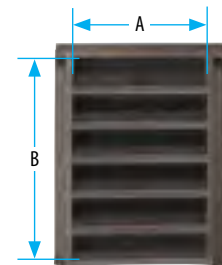
## Rectangular Gable Louver: Plaster Ground 1/8 inch galvanized insect screen

Size: A x B	N.F.V.	Galvanized	QTY
12 in. x 12 in.	50.5 sq. in.	GLPG1212G-1/8	10
12 in. x 18 in.	79.0 sq. in.	GLPG1218G-1/8	10
14 in. x 12 in.	56.2 sq. in.	GLPG1412G-1/8	10
14 in. x 18 in.	93.4 sq. in.	GLPG1418G-1/8	10
14 in. x 24 in.	131.6 sq. in.	GLPG1424G-1/8	10
18 in. x 24 in.	170.8 sq. in.	GLPG1824G-1/8	5
24 in. x 24 in.	221.5 sq. in.	GLPG2424G-1/8	5



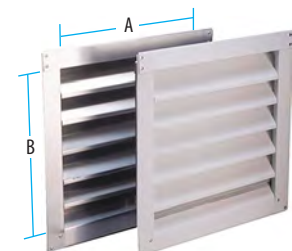
## Bonderized Gable Louver 1/8 inch galvanized insect screen

Size: A x B	N.F.V.	Part #	QTY
14 in. x 18 in. Flange Front	93.4 sq. in.	GLFF1418B-1/8	10
14 in. x 18 in. Plaster Ground	93.4 sq. in.	GLPG1418B-1/8	10
14 in. x 24 in. Plaster Ground	131.6 sq. in.	GLPG1424B-1/8	10



## Norwesco® Reversible Vent 30 Ga. Galvanized Steel · Louvered Screen · Reversible design for more flexible installation.

Size: A x B	N.F.V.	Galv.	Dk. Brown	White	QTY
8 in. x 12 in.	24 sq. in.	553200	-	-	6
12 in. x 12 in.	62 sq. in.	553220	553520	-	6
12 in. x 18 in.	100 sq. in.	553230	553530	553830	6
14 in. x 24 in.	162 sq. in.	553250	553550	553850	6
24 in. x 30 in.	358 sq. in.	553270	-	-	2



### Customer Service:

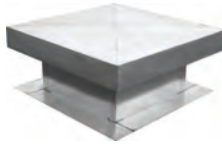
Award Metals | (800)-576-9810 | Award-CustomerService@gibraltar1.com  
 Norwesco | (800)-426-0940 | Norwesco-CustomerService@gibraltar1.com



# ROOF TOP VENTS

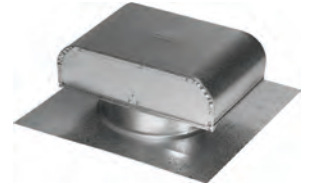
## Econo Vent 26 Gauge Galvanized Steel · Flat roof.

Size	N.F.V.	Part#	QTY
12 x 12 in.	160 sq. in.	1212EV	2
18 x 18 in.	240 sq. in.	1818EV	2



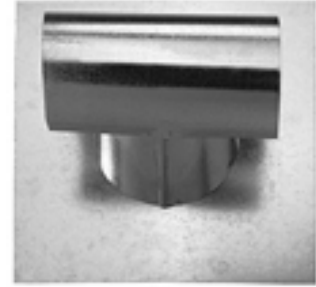
## J-Vent 26 Gauge Galvanized Steel · Pack Quantity: 6

Size	N.F.V.	Part #	Flange
3 inch	7 sq. in.	JV328	3 in. x 8 in.
4 inch	12 sq. in.	JV428	4 in. x 9 in.
8 inch	50 sq. in.	JV826	8 in. x 15 in.



## T-Top 26 Gauge

Description	Aluminum	Galvanized	Bonderized	Zinc	QTY
4 in. Standard Base	-	RJ4G	RJ4B	-	12
4 in. FHA Base - Hemmed	3TT4A	-	-	-	105
4 in. FHA Base - Unhemmed	-	3TT4G26	-	3TT4Z26	105
7 in. Standard Base	-	RJ7G	RJ7B	-	8
7 in. FHA Base - Unhemmed	3TT7A	-	-	3TT7Z26	50
7 in. Shake Base - Unhemmed	-	3TT7G26-HEM	-	3TT7Z26SEC	50



## T-Top Sub-Base

Size	Part #	QTY
4 in. Sub Base - 28 Ga.	SJ4G	20
5-6 in. Sub Base - 26 Ga.	3SBF56G26	20
7 in. Sub Base - 28 Ga.	SJ7G	20

## Vent Adapter For 6 in. circular roof vent

4 inch	6 inch	7 inch	QTY
559174	559176	559177	6

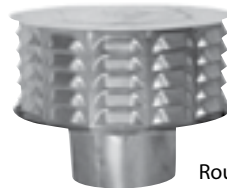


## Vent Caps

Size	Round	Oval	QTY
3 inch	RBVC3	-	24
4 inch	RBVC4	OBVC4	24
5 inch	RBVC5	-	12
6 inch	RBVC6	-	6



Oval



Round



## Code Caps & Bases Pack Quantity: 6

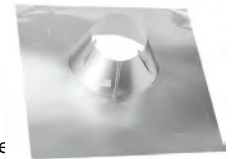
Size	Regular Base
3 inch	3CD3BaseR
4 inch	3CD4BaseR
5 inch	3CD5BaseR
6 inch	3CD6BaseR
8 inch	3CD8BaseR

Size	Shake Base
3 inch	3CD3BaseS
4 inch	3CD4BaseS
5 inch	3CD5BaseS
6 inch	3CD6BaseS
8 inch	3CD8BaseS

Size	Top Only
3 inch	3CD3TOP
4 inch	3CD4TOP
4 inch Oval	3CD4TOPO
5 inch	3CD5TOP
6 inch	3CD6TOP
8 inch	3CD8TOP



Top

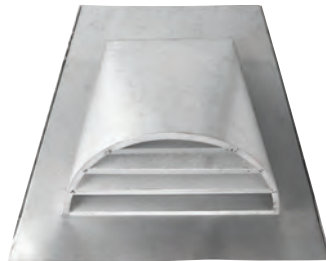


Base

## Half Round Dormer

Federal Spec. QQ-5775A, Type 1, Class 4 ASTM A-527 · Pack Quantity: 6

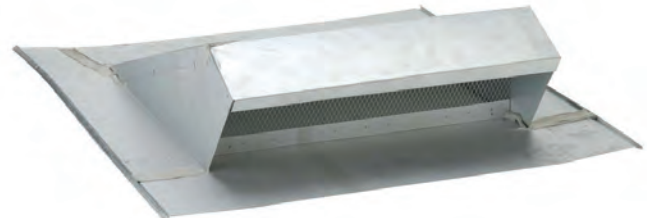
Size	N.F.V.	Part #
24 in. x 12 in.	100	BH24-1/8



## Low Profile Dormer

Galvanized Steel · Hard Flange · 1/4 in. mesh · Pack Quantity: 10

Size	N.F.V.	Part #
19 in. x 4 in.	43 sq. in.	LPDG19-1/8



## Soft Flange Dormer 1/8 in. galvanized mesh. Pack Quantity: 6

Galvanized Steel + Soft Aluminum Flange for curved tile roofs

Size	N.F.V.	Part #
24 x 12 - Aluminum 2 sides	91.9 sq. in.	STDS24-2B-1/8
24 x 12 - Aluminum 3 sides	91.9 sq. in.	STDS24-3B-1/8

## Kwik Mesh™

Galvanized - 1/8 in. mesh

Size	Part #	QTY.
4 in. x 25 ft.	KM425	6 rolls
6 in. x 25 ft.	KM625	6 rolls
8 in. x 25 ft.	KM825	3 rolls
12 in. x 20 ft.	KM1220	3 rolls

KM425	34.08 sq. in./ft. N.F.A.
KM625	51.12 sq. in./ft. N.F.A.
KM825	68.16 sq. in./ft. N.F.A.
KM1220	102.24 sq. in./ft. N.F.A.



## Aluminum Mesh

Aluminum - 1/8 in. mesh

Size	Part #	QTY.
4 in. x 100 ft.	969181	6 rolls
6 in. x 100 ft.	969182	4 rolls
8 in. x 100 ft.	969183	3 rolls
12 in. x 100 ft.	969186	2 rolls

## Customer Service:

Award Metals | (800)-576-9810 | Award-CustomerService@gibraltar1.com  
 Norwesco | (800)-426-0940 | Norwesco-CustomerService@gibraltar1.com

# ROOF TOP VENTS

## Metal Stem Vent Pack Quantity: 1

Size	Galv. - Stem Only	Black	Dark Brown	Gray
4 inch	556071	556060	556061	556074
6 inch	556072	556064	556065	-
8 inch	-	556070	556069	-



## Plastic Stem Vent Pack Quantity: 4

Size	Black	Dark Brown	Gray	White
4 inch	559427	559428	559425	559429
5 inch	559433	559434	-	-
6 inch	559439	559440	559437	-

4 inch Plastic Roof Cap - No Stem - Black	559415	6
4 inch Plastic Roof Cap - No Stem - Dark Brown	559416	6



## 24 in. Stealth Vent® 72 sq. in. N.F.V. · 26 Gauge Galvanized Steel · ICC ER-5463 · Dade County 80 mph wind driven rain test

Description	No Hem	Hemmed	QTY
Zinc	3STH24Z26ANH	3STH24Z26A	50
Black	3STH24BL26ANH	3STH24BL26A	50
Brown	3STH24BR26ANH	3STH24BR26A	50
Charcoal	3STH24CH26ANH	3STH24CH26A	50
Sub-Base with Screen	3SBF24Z26STHS	-	10

Roof Deck Opening: 14 in. x 5 in. Hemmed Vent for Tile Roofs; requires Sub-Base. Sub Base not required for unhemmed composition shingle application.



Black Mesh, 36, & 48 inch Stealth Vents available upon request, order minimum 100. Contact your Gibraltar Rep for further details.

## 50 Square Inch Plastic Vent Pack Quantity: 12

	Black	Brown	D. Brown	Gray	Translucent	Wth'd Gray	White
PRV-50	559012	559010	559011	559013	-	559015	-
AF-50	559453	559450	559454	559451	559449	559452	559455



PRV-50



AF-50

## 92 Square Inch Plastic Vent



\* Translucent Vent has a Gray Base

Black	Brown	Dk. Brown	Gray	Translucent	Weathered Gray	QTY
559471	559468	559472	559469	559445*	559470	8

## 61 Square Inch Plastic Vent



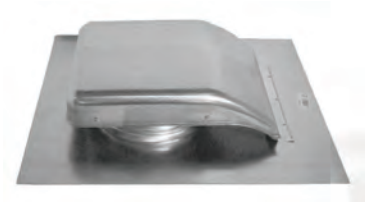
Color	Part #	QTY
Black	90121	10

### Customer Service:

Award Metals | (800)-576-9810 | Award-CustomerService@gibraltar1.com  
 Norwesco | (800)-426-0940 | Norwesco-CustomerService@gibraltar1.com

### 38 Square Inch Steel Vent Slant Back · Galvanized Steel · 17 in. x 20 in. flange

Galvanized	Black	Dark Brown	Gray	White	QTY
558011	557167	556157	557157	556167	6



### 38 Square Inch Steel Vent Square Top · Galvanized Steel · 17 in. x 17 in. flange

	Galvanized	Black	Dark Brown	Gray	White	QTY
Standard	556042	557059	556159	557159	556150	6
Torch Down	-	557168	556186	557171	557164	4



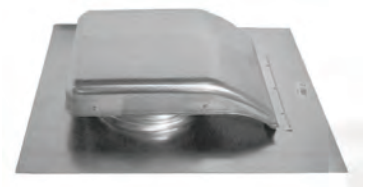
### 40 Square Inch Steel Vent Slant Back · Galvanized Steel

Black	Brown	QTY
RVG40010	RVG40080	9



### 49 Square Inch Steel Vent Slant Back · 18 in. x 22 in. flange

Galvanized	Black	Dk. Brown	Gray	White	QTY
558012	557153	556154	557154	557145	6



### 49 Square Inch Steel Vent Square Top · 18 in. x 18 in. flange

Black	Dark Brown	Gray	QTY
557160	556158	557158	6



### 50 Square Inch Steel Vent

Description	Galvanized	Black	Brown	QTY
Square Top	RVG51000	RVG51010	RVG51080	9
Slant Back	-	RVG55016	RVG55086	6
50 Square Inch Aluminum Vent - Mill Finish			RVA510000	12



#### Customer Service:

Award Metals | (800)-576-9810 | Award-CustomerService@gibraltar1.com  
 Norwesco | (800)-426-0940 | Norwesco-CustomerService@gibraltar1.com

# SIDEWALL VENTS

## Ventilating Access Door

1/8 inch mesh · For crawl space access

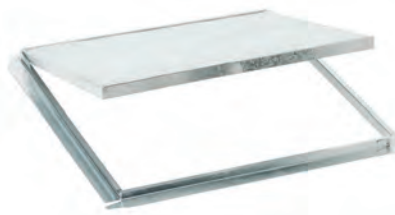


18 in. x 24 in. | R.O.: 18.25 in. x 25 in.

Description	Part #	QTY
Ventilating Access Door	CHADS-1/8	10

## Tub Access Door

Pressure fit door · Drywall Frame



14 in. x 14 in.

Description	Part #	QTY
Tub Access Door	TA14DW	10

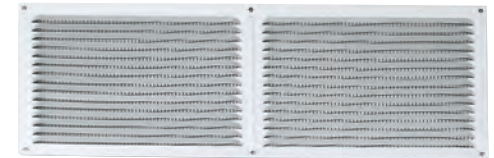
## 4 Inch Dryer Cap



Description	Part #	QTY
Galvanized Steel	DV4	14

## Aluminum Louvered Vents For soffit and eave venting

Size: A x B	N.F.V.	R. Opening	Mill	Brown	White	QTY.
16 in. x 4 in.	28 sq. in.	15 in. x 3 in.	84126	84228	84226	24
16 in. x 6 in.	42 sq. in.	15 in. x 5 in.	84115	84217	84215	24
16 in. x 8 in.	56 sq. in.	15 in. x 7 in.	84210	84212	84211	24



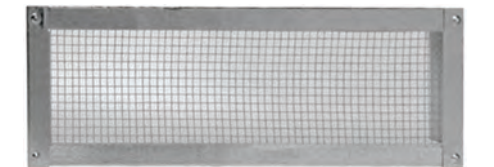
## Flat Screen Vent Galvanized Steel · 1/8 in. mesh

Size: A x B	N.F.V.	Rough Opening	Part #	QTY.
16 in. x 4 in.	23.7 sq. in.	14.5 in. x 2.5 in.	SCV164-1/8	25
16 in. x 6 in.	42.6 sq. in.	14.5 in. x 4.5 in.	SCV166-1/8	25
16 in. x 8 in.	61.5 sq. in.	14.5 in. x 6.5 in.	SCV168-1/8	25



## Two Way Vents Galvanized steel · 1/8 in. mesh · Reversible flange for plaster or surface mount

Size: A x B	N.F.V.	Rough Opening	Part #	QTY.
14 in. x 4 in.	28.4 sq. in.	13.75 in. x 3.25 in.	TW144-1/8	30
14 in. x 6 in.	44.8 sq. in.	13.75 in. x 5.25 in.	TW146-1/8	24
14 in. x 8 in.	62.2 sq. in.	13.75 in. x 7.25 in.	TW148-1/8	16



## Two Way Vent With decorative floral plastic insert

Description	Part #	QTY.
14 in. x 6 in. Vent + Insert	TWPIV-1/8	24
Insert only	PIV614	24



## Mini Louver Aluminum, with Screen

Size	N.F.V.	Part #	QTY.
1-1/2 inch	0.39 sq. in.	ML1.5	12
2 inch	0.45 sq. in.	559111	36
2-1/2 inch	1.2 sq. in.	559112	36
3 inch	1.7 sq. in.	559001	36
4 inch	3.5 sq. in.	559002	36



## Mini Louver Aluminum, no Screen

Size	N.F.V.	Part #	QTY.
2 inch	0.47 sq. in.	ML2	100
3 inch	1.34 sq. in.	ML3	50
4 inch	2.88 sq. in.	ML4	20

### Customer Service:

Award Metals | (800)-576-9810 | Award-CustomerService@gibraltar1.com  
Norwesco | (800)-426-0940 | Norwesco-CustomerService@gibraltar1.com

# EAVE & SOFFIT VENTS

## Continuous Soffit Vent

Description	N.F.V.	Mill	Black	Brown	White	QTY.
Aluminum	9 sq. in./ft.	556004	556014	556018	556019	30
Plastic	8.2 sq. in./ft.	n/a	-	559006	559007	75



## Soffit Vent Stucco Ready - 1/8 inch mesh

Size: A x B	N.F.V.	Rough Opening	Part #	QTY.
14 in. x 5 in.	52.1 sq. in.	14.5 in. x 5.5 in.	SV145-1/8	26
22 in. x 3 in.	51.4 sq. in.	22.5 in. x 3.25 in.	SV223-1/8	9



## Flush Mount Soffit Vent 1/8 inch Mesh - Pack Quantity: 12

Description	N.F.V.	Galvanized	Brown	White	QTY.
16 in. x 4 in.	24 sq. in.	556005	556146	556446	12
16 in. x 6 in.	40 sq. in.	558006	556147	556447	12
16 in. x 8 in.	58 sq. in.	558007	556148	556448	12



## Flush Mount Soffit Vent With Damper - 1/8 inch Mesh - Pack Quantity: 12

Description	N.F.V.	Galvanized	Brown	White	QTY.
16 in. x 4 in.	24 sq. in.	558025	556161	556461	12
16 in. x 6 in.	40 sq. in.	558026	556162	556462	12
16 in. x 8 in.	50 sq. in.	558027	556163	556463	12



with manual damper

## Eave Vent Stucco or Straight Flange - 1/8 inch mesh

Size	N.F.V.	Galvanized	Bonderized	Brown	QTY.
22 in. x 3 in. - 1/8 mesh - STU	34.3 sq. in.	EV223-1/8	-	-	25
22 in. x 3 in. - 1/8 mesh - REG	34.3 sq. in.	-	556017	556015	50
22 in. x 3 in. w/Louvers - REG	34.3 sq. in.	-	556007	-	50
22 in. x 6 in. - 1/8 mesh - REG	61.7 sq. in.	EV622-1/8	-	-	25
14 in. x 5 in. - 1/8 mesh - STU	38.2 sq. in.	EV145-1/8	-	-	25
14 in. x 6 in. - 1/8 mesh - REG	38.2 sq. in.	EV614-1/8	-	-	25



STU = Stucco Flange  
REG = Straight Flange



## Adjustable Foundation Vent

Aluminum, with sliding damper



Description	N.F.V.	Part#	QTY.
16 in. x 8 in.	102 sq. in.	FA109000	12

## Stamped Foundation Vent Stucco Reveal



Galvanized

Description	N.F.V.	Part #	QTY.
14 x 6 in. - 1/8 mesh	51	FV146G-1/8	25
16 x 8 in. - 1/8 mesh	75	558037	30

Bonderized

14 x 6 in. - 1/4 mesh	51	FV146B-1/8	25
-----------------------	----	------------	----

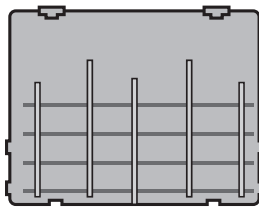
## Rim Vent Pack Quantity: 24



Rugged UV resistant plastic

Description	N.F.V.	Part #
16 in. x 8 in. - White	62 sq. in.	559408

## Damper Doors - Foundation Vent Clips



Description	Part#	QTY.
Vent-Aire Door	559217	80
Norwesco - PFV6-8	596140	72

## Foam Plugs Sold in Pairs



DVBPSM-EA



DVBP



DVBPXL

Description	Part#	QTY.
Lawrence - 5.5 in. x 7.5 in	DVBPSM-EA	45
Vent-Aire - 6.5 in. x 7.75 in.	DVBP	40
Norwesco - 6.5 in. x 8.75 in.	DVBPXL	36

## Pour-In-Place Foundation Vent

Description	N.F.V.	Color	Part#	QTY.
PFV-6-8 Combo	100 sq. in.	Gray	596037	12
PFV-6-8 Combo - with damper door	100 sq. in.	Gray	596137	12
6 in.- with damper door	72.5 sq. in.	Gray	DVB6	20
6 in. - no door	72.5 sq. in.	Gray	559021	20
6 in. - with damper door	72.5 sq. in.	Gray	559023	20
6 in. - no door	72.5 sq. in.	Black	559020	20
6 in. - with damper door	72.5 sq. in.	Black	559022	20
8 in. - no door	72.5 sq. in.	Gray	559027	15
8 in. - with damper door	72.5 sq. in.	Gray	DVB8	15
8 in. - no door	72.5 sq. in.	Black	559026	15
8 in. - with damper door	72.5 sq. in.	Black	559028	15
10 in. - with damper door	72.5 sq. in.	Gray	559035	12

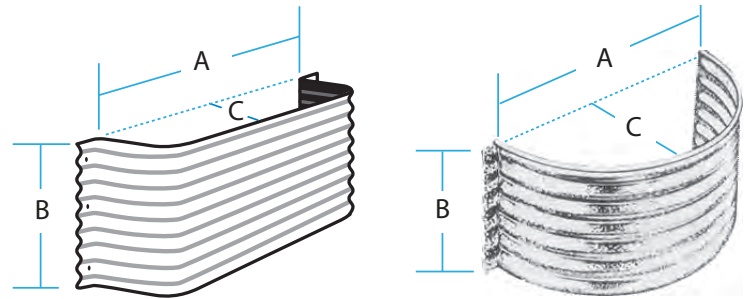


### Customer Service:

Award Metals | (800)-576-9810 | Award-CustomerService@gibraltar1.com  
 Norwesco | (800)-426-0940 | Norwesco-CustomerService@gibraltar1.com

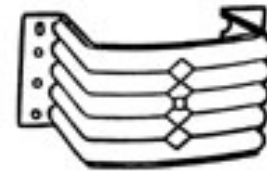
## Galvanized Vent Wells

Description - A x B x C	Part#	QTY.
Rectangular - 20 in. x 4 in. x 12	FVW204-12	10
Rectangular - 20 in. x 4 in. x 12 - 20 Gauge	553031	5
Rectangular - 20 in. x 8 in. x 12 - 20 Gauge	553022	5
Rectangular - 20 in. x 12 in. x 12 - 20 Gauge	553001	6
Arched - 20 in. x 8 in. x 12	FVW208-12	10



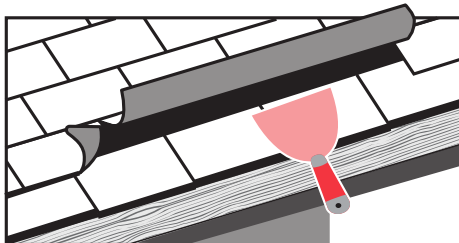
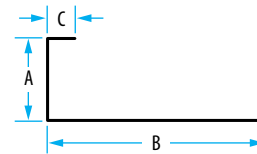
## Plastic Vent Wells

Description - A x B x C	Part#	QTY
Dark Brown - 19 in. x 4 in. x 12	569040	10
Gray - 19 in. x 4 in. x 12	569041	10
Gray - 19 in. x 8 in. x 12	569081	6



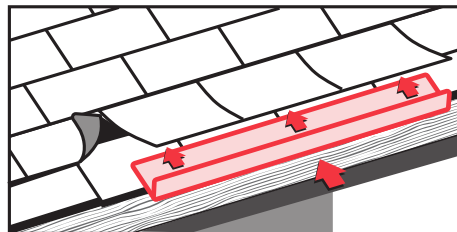
## Rain Diverter

Description	Part #	QTY
28 Ga. Galvanized - 1 1/2 in. x 4 in. x 1/2 in. - 6 ft. Length	RD672G	20
26 Ga. Zinc - 2 in. x 8 1/2 in. x 1/2 in. - 10 ft. Length	RD2855-Z	20



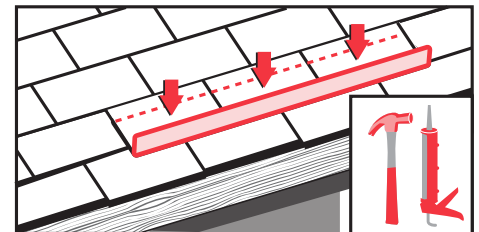
Gently lift 2nd row of shingles, directly above the doorway.

Rain Diverter can also be used to evenly disperse 2nd story downspout runoff to a pitched 1st story roof.



Slide Rain Diverter under shingles as far as it will go, giving it a slight pitch to one side.

Your Rain Diverter should extend at least 1 ft. on either side of the doorway. Cut to desired length with tin snips. For lengths greater than 60 in., overlay 2 or more Rain Diverters.



Fasten with 3 hot dipped galvanized roofing nails.

Seal nail heads with roofing cement and press shingles back into place.

### Customer Service:

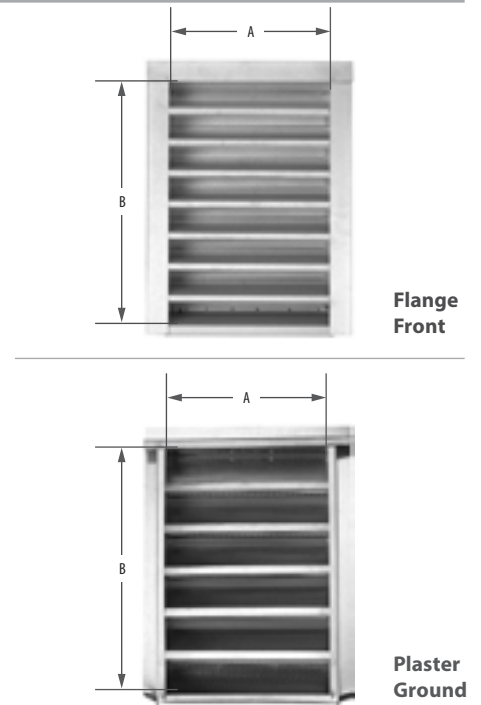




# VENTILATION PRODUCTS

**Rectangular Gable Louvers** Screened louvers produced in Front Flange and Plaster ground mounts.  
28 Gauge Galvanized Steel · 1/8 inch mesh

Description: A x B	N.F.V.	Part #	QTY
12 in. x 12 in. - Flange Front	63 sq. in.	GLFF1212G-1/8	10
12 in. x 18 in. - Flange Front	93 sq. in.	GLFF1218G-1/8	10
14 in. x 18 in. - Flange Front	110 sq. in.	GLFF1418G-1/8	10
14 in. x 24 in. - Flange Front	147 sq. in.	GLFF1424G-1/8	10
18 in. x 24 in. - Flange Front	190 sq. in.	GLFF1824G-1/8	5
24 in. x 30 in. - Flange Front	317 sq. in.	GLFF 2430G-1/8	5
12 in. x 12 in. - Plaster Ground	63 sq. in.	GLPG1212G-1/8	10
14 in. x 12 in. - Plaster Ground	65 sq. in.	GLPG1412G-1/8	10
14 in. x 18 in. - Plaster Ground	110 sq. in.	GLPG1418G-1/8	10
18 in. x 24 in. - Plaster Ground	190 sq. in.	GLPG1824G-1/8	5



**Total JACK™** The only roof jack with an adjustable stack and base. Adjusts to fit most roof pitches.  
US Patents #8,534,013 B3 and #8,615,943 B2.

Size	Mill	Black	Brown	Weathered Wood	QTY
6 inch	JACK6GZ	JACK6BLK	JACK6BRN	JACK6WWD	7
8 inch	JACK8GZ	JACK8BLK	JACK8BRN	JACK8WWD	6



Galvanized steel in accordance to ASTM A924/A653  
**Base Thickness:** Galvanized 0.016 in. / Painted 0.019 in.  
**Stack Thickness:** Galvanized 0.012 in. / Painted .013 in.  
**Cap Thickness:** Galvanized 0.012 in. / Painted 0.013 in.





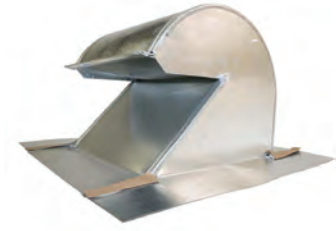
# VENTILATION PRODUCTS

**Gooseneck Vents** Sheltered internal air dampers provides one-way air venting with damper. Often used for kitchen or bath exhaust. Self flashing flanges make for easy installation on new or existing construction.

Description	Mill	White	Brown	Black	N.F.A.	QTY
4 in. - 26 Gauge Galvanized Steel	17615	17640	17592	60027	12	12
10 in. 26 Gauge Galvanized Steel	22999	17644	17596	17605	30	6

Description	Standard	QTY	N.F.A.	Tile	QTY
4 in. - 26 Gauge Galvalume Steel	60011	12	12	60566	6
6 in. - 26 Gauge Galvalume Steel	60635	6	18	98302	4
10 in. - 26 Gauge Galvalume Steel	60010	6	30	98301	4



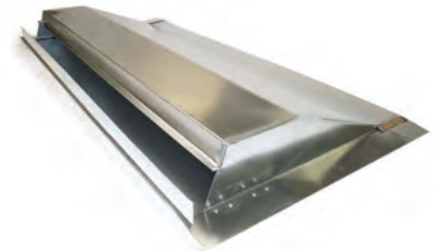
**One-way air venting damper**

**Weather Vent™** Screened external wind baffle provides superior air flow with maximum weather protection. U.S. Patent Number: 7,044,852 B2

Length	Galvanized	Galvalume	White	Brown	Black	N.F.A.	QTY
2 foot - 26 Gauge	-	-	-	-	80004	52	1
4 foot - 26 Gauge	63000	60014	63003	63002	63001	105	1
6 foot - 26 Gauge	-	-	-	17594	17603	156	2
8 foot - 26 Gauge	-	-	-	-	17604	207	2

Length	26 Gauge Galvalume	N.F.A.	QTY
Tile: 4 foot - With Baffle	63130	105	1
Tile: 4 foot - Without Baffle	60094	105	1
Tile: 8 foot - Without Baffle	60028	225	2



Miami Dade approved,  
NOA Number 03-1008.02

**Total JACK™** The only roof jack with an adjustable stack and base. Adjusts to fit most roof pitches. US Patents #8,534,013 B3 and #8,615,943 B2.

Size	Mill	Black	Brown	Weathered Wood	QTY
6 inch	JACK6GZ	JACK6BLK	JACK6BRN	JACK6WWD	7
8 inch	JACK8GZ	JACK8BLK	JACK8BRN	JACK8WWD	6

**Galvanized steel in accordance to ASTM A924/A653**  
**Base Thickness:** Galvanized 0.016 in. / Painted 0.019 in.  
**Stack Thickness:** Galvanized 0.012 in. / Painted .013 in.  
**Cap Thickness:** Galvanized 0.012 in. / Painted 0.013 in.



**Universal Ridge Vent** - Aluminum Removes superheated attic air. Self-flashing. Can be installed on new or existing construction. Embossed Aluminum. 10 ft. lengths.

Description	Black	Brown	Bronze	Gray	White	QTY
10 ft. Universal Ridge Vent	84403	84405	84406	84402	84399	12
End Plug/Connector - Rubber	84426	-	-	-	-	12
End Plug/Connector - Foam	40237	-	-	-	-	24



**RV-10**  
**N.F.A.**  
**16 sq. in./ft.**

# NOTES

---

# NOTES

---

# NOTES

---



ventilation@gibraltar1.com  
(800) 247-8368 (800-AIR-VENT)



ASCcustomerservice@gibraltar1.com  
(800) 558-3414



Award-CustomerService@gibraltar1.com  
(800) 576-9810



DOT-CustomerService@gibraltar1.com  
(855)-213-6804



Norwesco-CustomerService@gibraltar1.com  
(800) 426-0940



orders@qualityaluminum.com  
(800) 550-1667



SEMCO-CustomerService@gibraltar1.com  
(800) 874-0335

# GIBRALTAR

BUILDING ACCESSORIES DIVISION

AIR VENT | APPLETON | AWARD | DOT  
NORWESCO | QAP | SEMCO